

# THE FIELD OF EMOTIONS



**arch. Rosetta Angelini**  
PHD. Teory and Project  
director: *Prof. Antonino Saggio*  
Nitro Group

martedì 3 settembre 13

# THE CHANGE OF PARADIGMA

The evolution science and, in special way the exploration of the submicroscopic world determinated a profound changement of our world vision and of ourselves

*Thomas Khun\_inizi del '900*

to definite the scientific paradigma concept as a insieme diconcept, valori, perceptiones and comportamenes condivisi by a comunitè that da a particular vision of the reality what base of the world where the organize communitè's





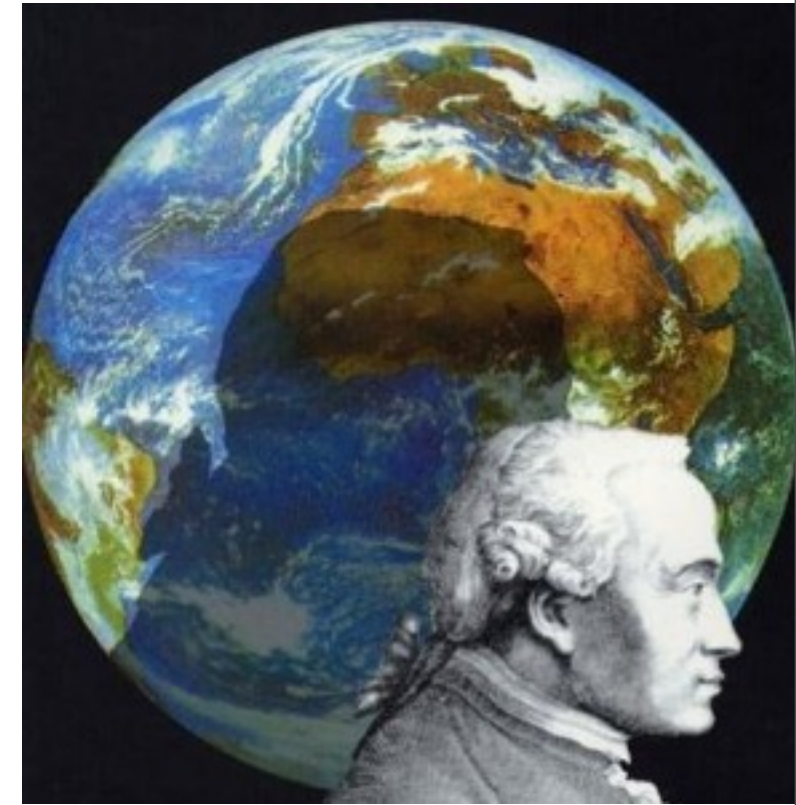




# FRAGMENTED VISION

Until the end of the eight hundred, mind and matter and space and time were considered according to the vision of Descartes and Newton entities absolute and separated

This fragmented vision reflects a world vision consist of separate and independent parts and is applied analytical and deterministic method



# UNITARY VISION

The great Revolution there was with the discovery of submicroscopic world, where are inseparable and interacting the atoms

**XIX sec. M. Faraday e J. C. Maxwell** have discovered that the atoms are always moving and raplace the concept of force with that of the field forces

## THE ATOMS ARE NOT ONLY PARTICLES BUT ALSO WAVES

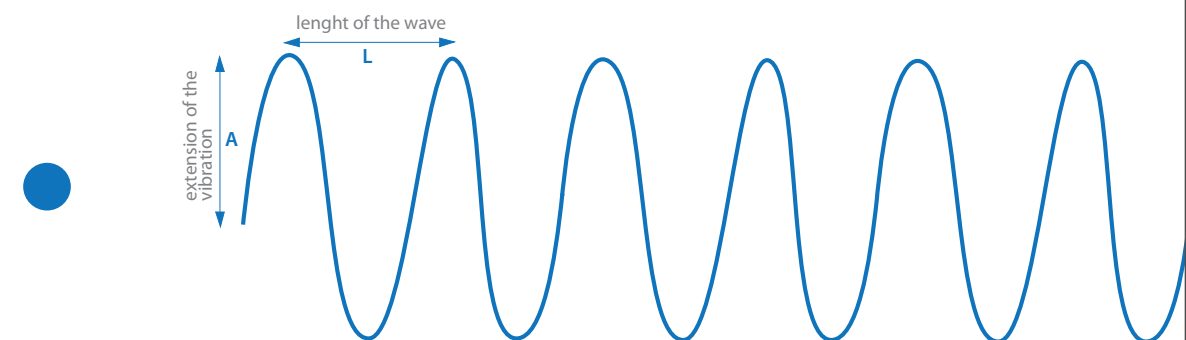
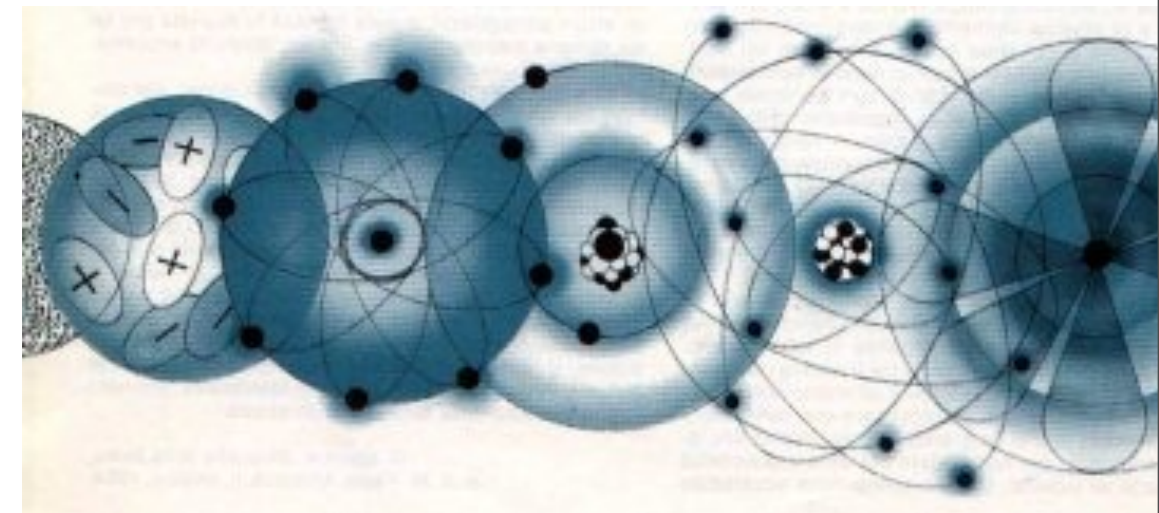
Exist a **PACKAGE OF ENERGY** that Einstein how many calls

**QUANTI**\_are massness particles always moving at the speedy of light

If the particles are also waves we can not know the exact position of the particles but only its tendency to exist in a particular **region and the tendency to show an atomic event**

this tendency is the **PROBABILITY**

## THE PARTICLE EXIST AND NOT EXIST







# COSMIC DANCE

## **INDETERMINATION PRINCIPLE** \_ *Werner Heisenberg*

In the subatomic world we can never know contemporary the position of the particle and its amount of movement but only a field or region

## **COMPLEMENTARY PRINCIPLE** \_ *Niels Bohr*

The representation of a particle is date from the description of both the particle and wave

## **ALL OBJECTS ARE NOT STATIC BUT DYNAMIC**

The interaction between all atoms is to the basis of all the living beings where the observer is fundamental link

**each particle can be defined trough its connection  
trough its attivity-process**

**but is each atom is connected and if each mass is a form of energy**

the force that from origin to all the atomic phenomena is the force of eletrical attraction between the positively charged atomic nucleus and negatively charged electrons

All is connected in a **DANCE OF ENERGY** is a process of creation and distruction is a **COSMIC DANCE** where the energy field exist everywhere and can not never be eliminated

**The exist or not exist of the particles are the formes of move of the field**

The eastern philosophers speak of Void Living

## **VOID LIVING**

decade the concept of limit and of understood as linear space, definted and circumscribed

## **EVENTS SPACE**









...but the idea of unitary system in which all elements are interacting and knowledge of the atoms are concepts that already knew twenty-five thousand years ago

Whit the MILESIAN SCHOOL (VI sec.a.c) where Heraclitus said that the world was costantly moving and spoke of "ETERNAL BECOMING "

Leucippo and Democritos (V sec.a.c.) have discovered the atoms " fundamental brick"

THIS IS QUESTION

## AS THEY DID?

of course they had the tools of knowledge but not so fine

ALL CLASSICAL AND EASTERN PHILOSOPHY TO SPEAK OF A KNOWLEDGE OF ANOTHER ORDER CAN NOT EXPLAINED

## IT'IS THE INTUITION

FROM THE LATIN IS INTUEUR

IN = INTO

TUEUR = LOOK

## LOOK INTO

FOR THE EASTER PHILOSOPHY IT'S A INNER KNOWLEDGE, IS THE CAPACITY GET TO ESSENCE OF THINGS

THE INTUITION IS A INNER KNOWLEDGE CAN NOT EXPLAINED EXCEPT IN MEDIATED FORM

MAYBE THIS MEDIATED FORM CAN BE THE  
**METAPHOR**

Hans Blumenber "*Paradigmi per una metaforologia*", 1960

Trouhg the metaphor if we can not produce the intuition of idea a least trough the analogy, to define the qualities

The metaphor gives the idea of what the object represents for us





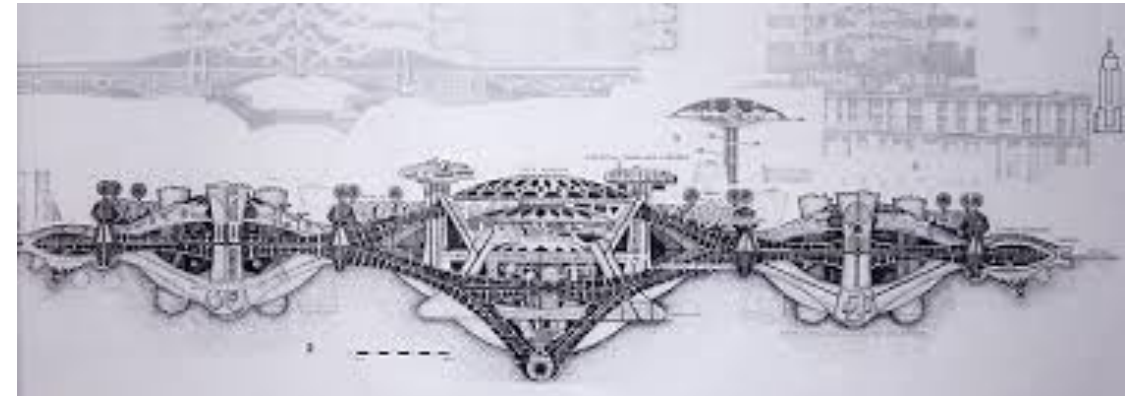


In my experience there are three ways to develop a project idea

What we identify this ways?

## Through the formal result

1) **dreamscape** / visionary approach



2) **inner landscape** / emotional approach



3) **mental landscape** / evocative approach





# VISIONARY APPROACH / dream landscape

Is necessary to forget every convention

We can imagine a timeless space?

The General Teory of Relativity of Einstein  
not only the **space=time**  
but adds the force of gravity

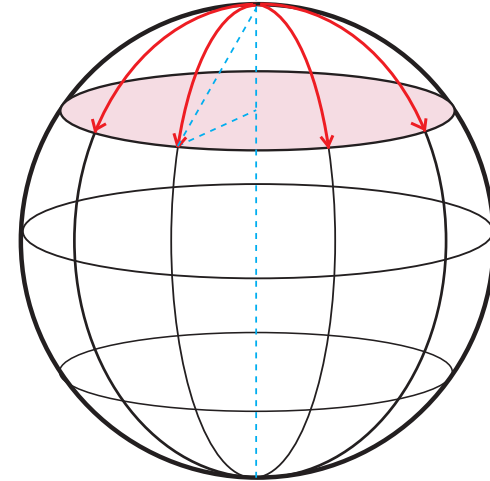
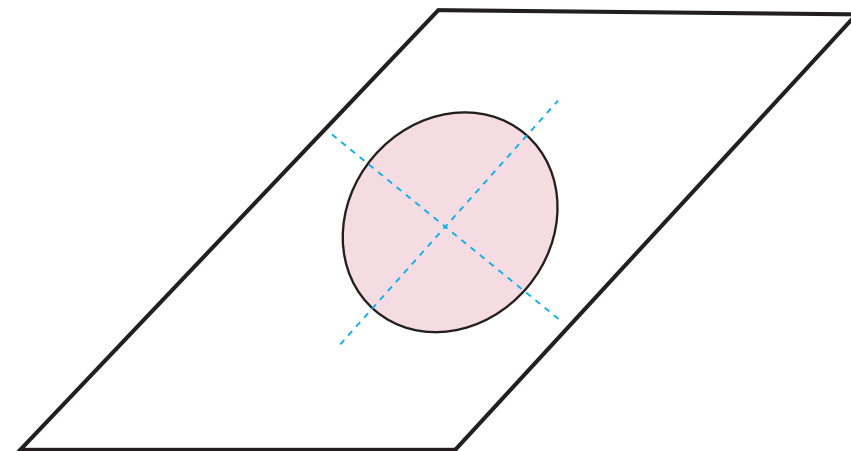
the force of gravity has the effect of bending the space-time

The effect of the force of gravity on earth is impercetible  
but in cosmic space is fundamental

Inside the Holes Black the force of gravity is very strong, the star  
contracts and space curve until the light fails more  
This fase is called  
**"EVENTS HORIZON"**

in this fase we do not receive any signal from the star and the time is  
canceled  
Infact, if we put inside a star a clock would stop

When our ordinary time is canceled?



# WHEN WE DREAM

The dream cancels the perception of time and space

The dreams are expressed through the metaphorical image

# UNCONSCIOUS

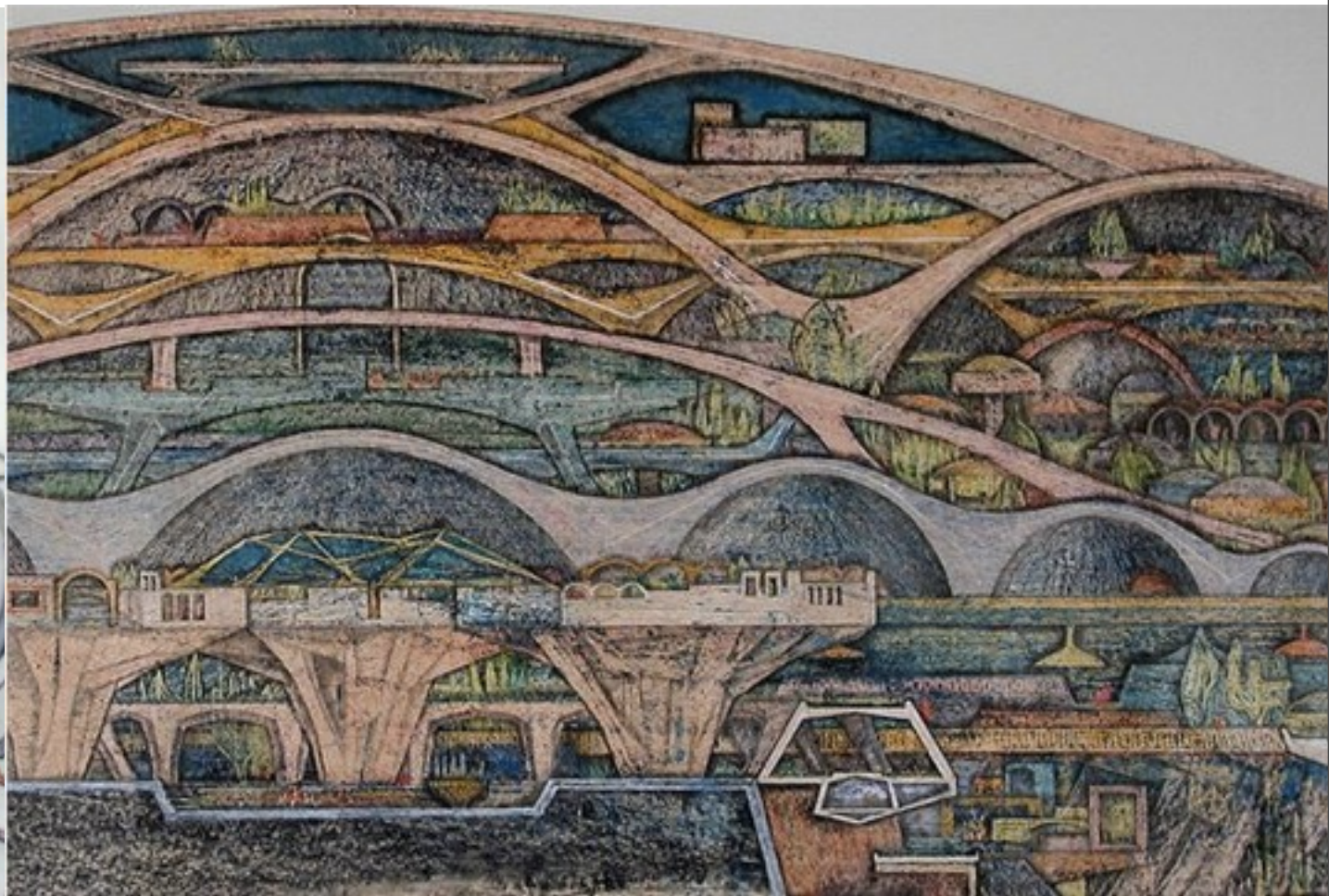
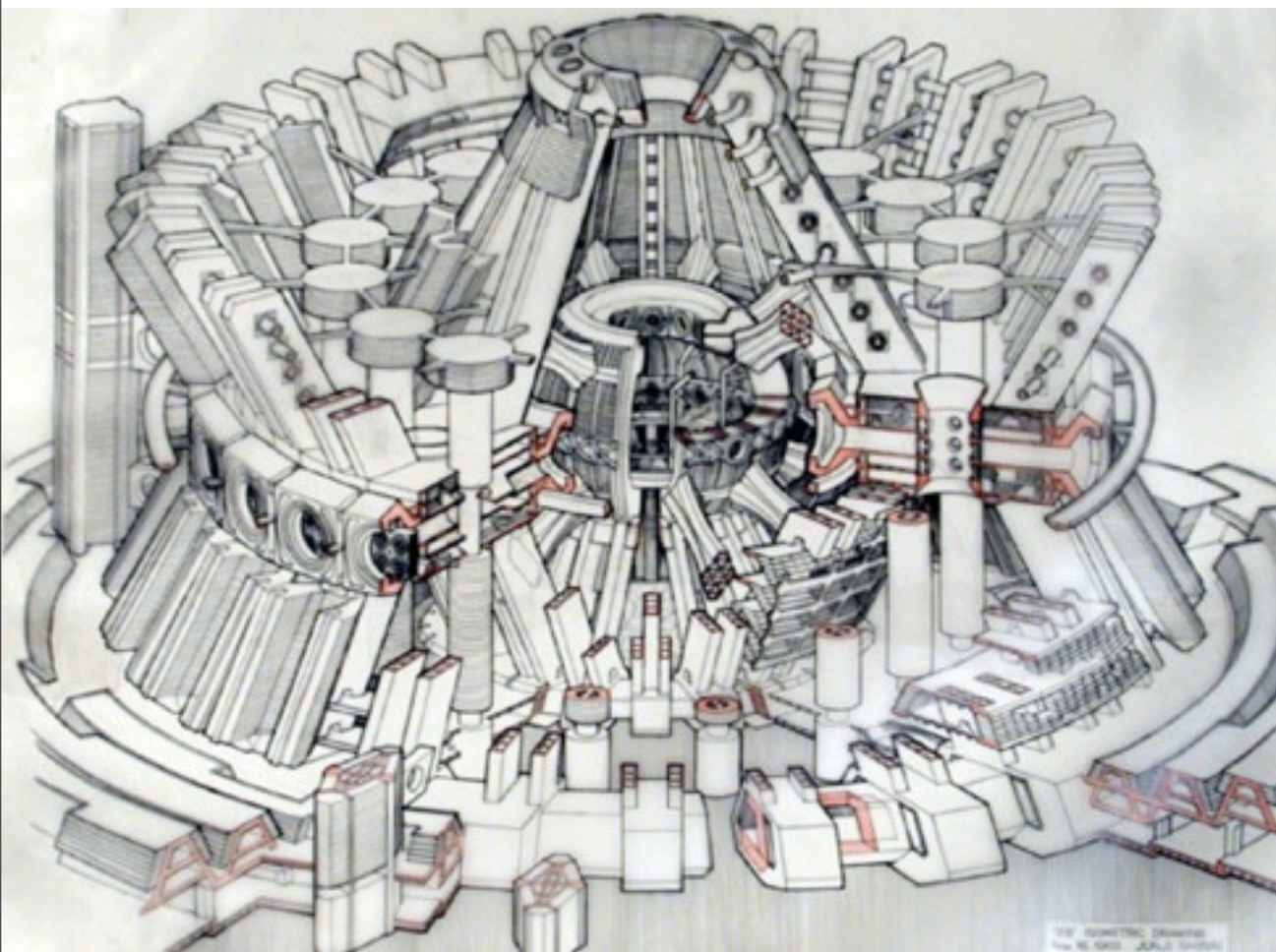
the world of dreams is the world of the unconscious and the metaphor is its expression





# VISIONARY APPROACH / oniric world

## INCONSCIUS



We are in another dimension in a another world  
in a surreal landscape



# EMOTIVE APPROACH / inner landscape

explore our inner world



is almost visceral, the emotional world without filters  
becomes the project





# **EVOCATIVE APPROACH/** mental landscape <sub>1</sub> (*Prof. Antonino Saggio*)

development of a project that we feel particularly close or with which we identify

**study - understanding - identifiycation - processing**



The result is a project where is possible recognize the font of ispiration but it's revised is a new project

In all these approach there is a thing in common

# WHILE?







**we**



# The metaphor can be a way to bring out our feeling

**1) key words** / identification of particular characteristics that affect us in a project, we can express them through actions or feelings

**2) for explain the feelings or actions** | identification of a borrowed image that best expresses our feeling

**3) processing of metaphor search from the essence of feeling**

processing is managed when looking at our project is not immediate image origin of inspiration and often can be many *as if...was ecc...*

# The metaphor can be a way to bring out our feeling

**1) key words** / identification of particular characteristics that affect us in a project, we can express them through actions or feelings

**2) for explain the feelings or actions** | identification of a borrowed image that best expresses our feeling

**3) processing of metaphor search from the essence of feeling**

processing is managed when looking at our project is not immediate image origin of inspiration and often can be many *as if...was ecc...*



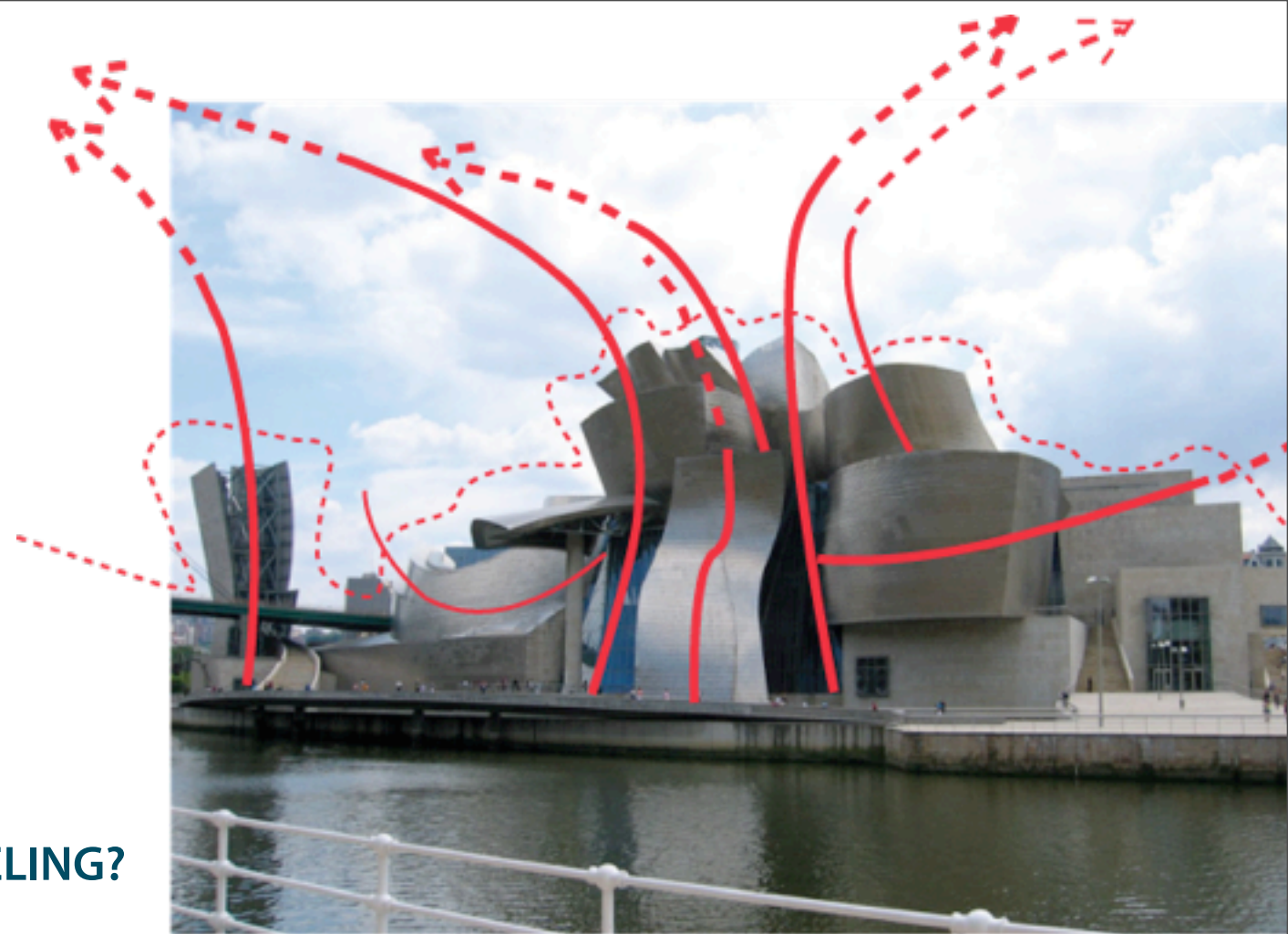
## 1) KEY WORDS

- spatial tension
- moving
- various points view

## 2) RESEARCH OF THE IMAGE IN OUR MIND

- Dancer
- Clay shaped
- Trees blowing in the wind

WHICH OF THESE IMAGES IS MORE CLOSE OUR FEELING?



## 3) PROCESSING OF THE METAPHOR

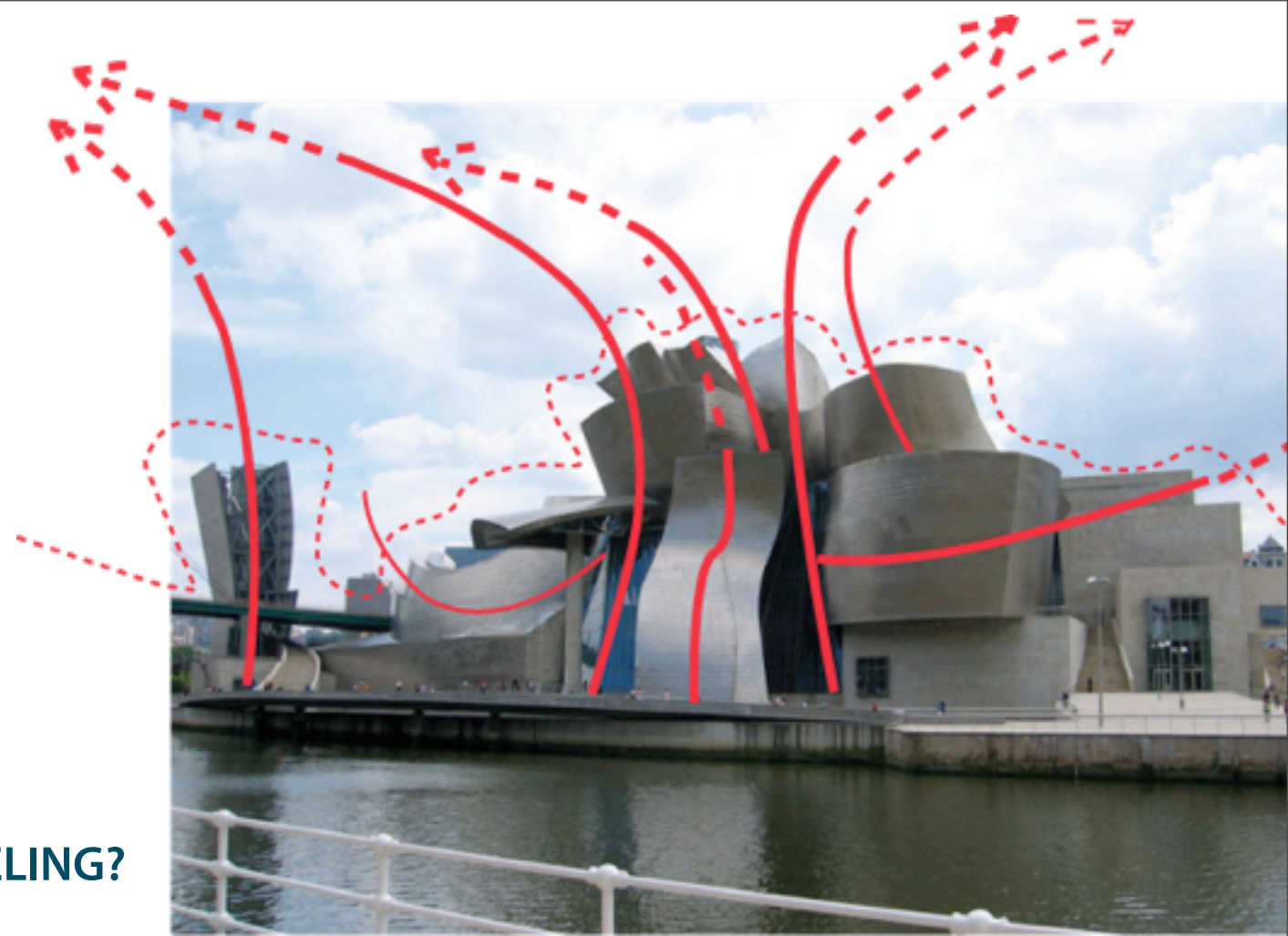
## 1) KEY WORDS

- spatial tension
- moving
- various points view

## 2) RESEARCH OF THE IMAGE IN OUR MIND

- Dancer
- Clay shaped
- Trees blowing in the wind

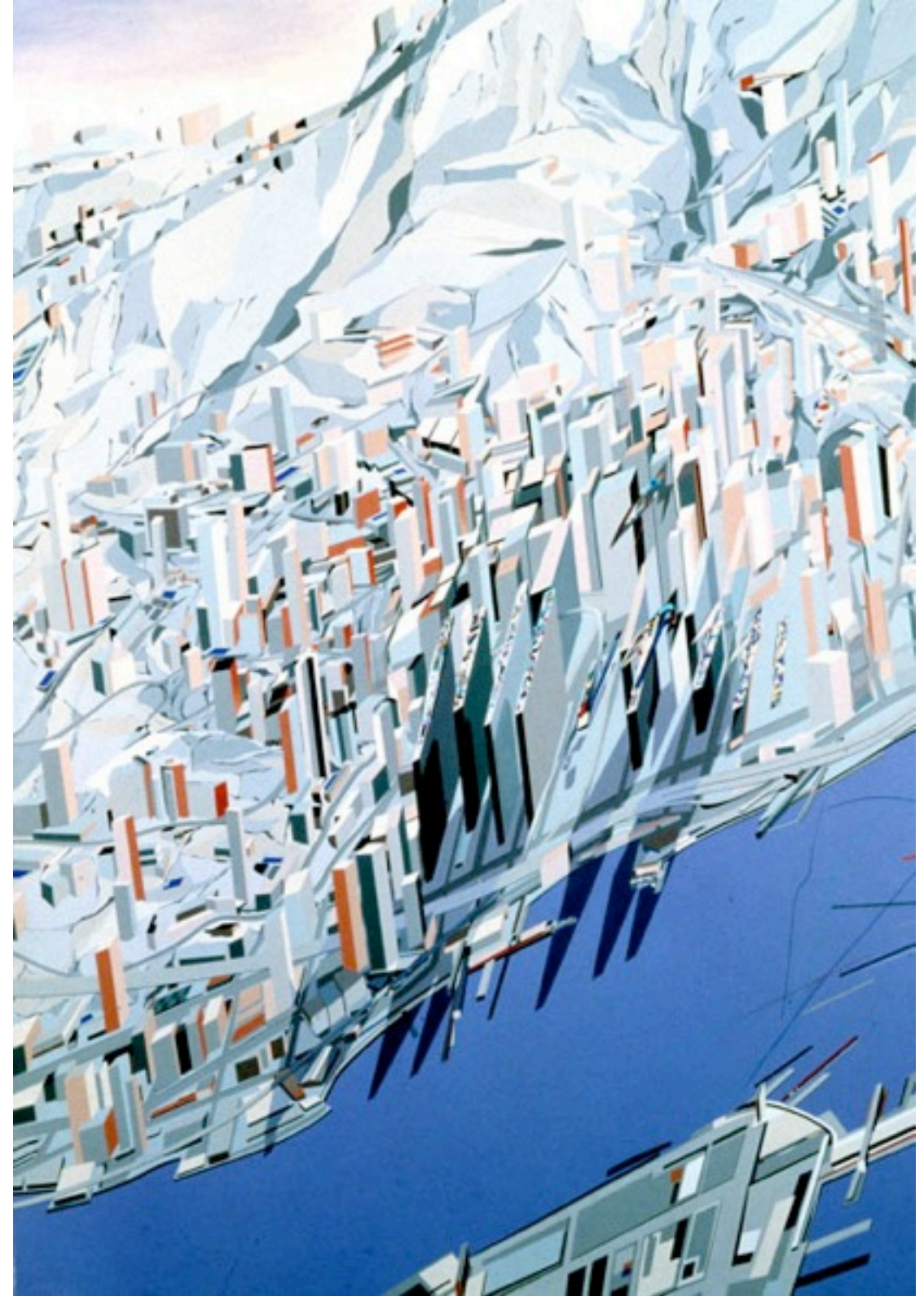
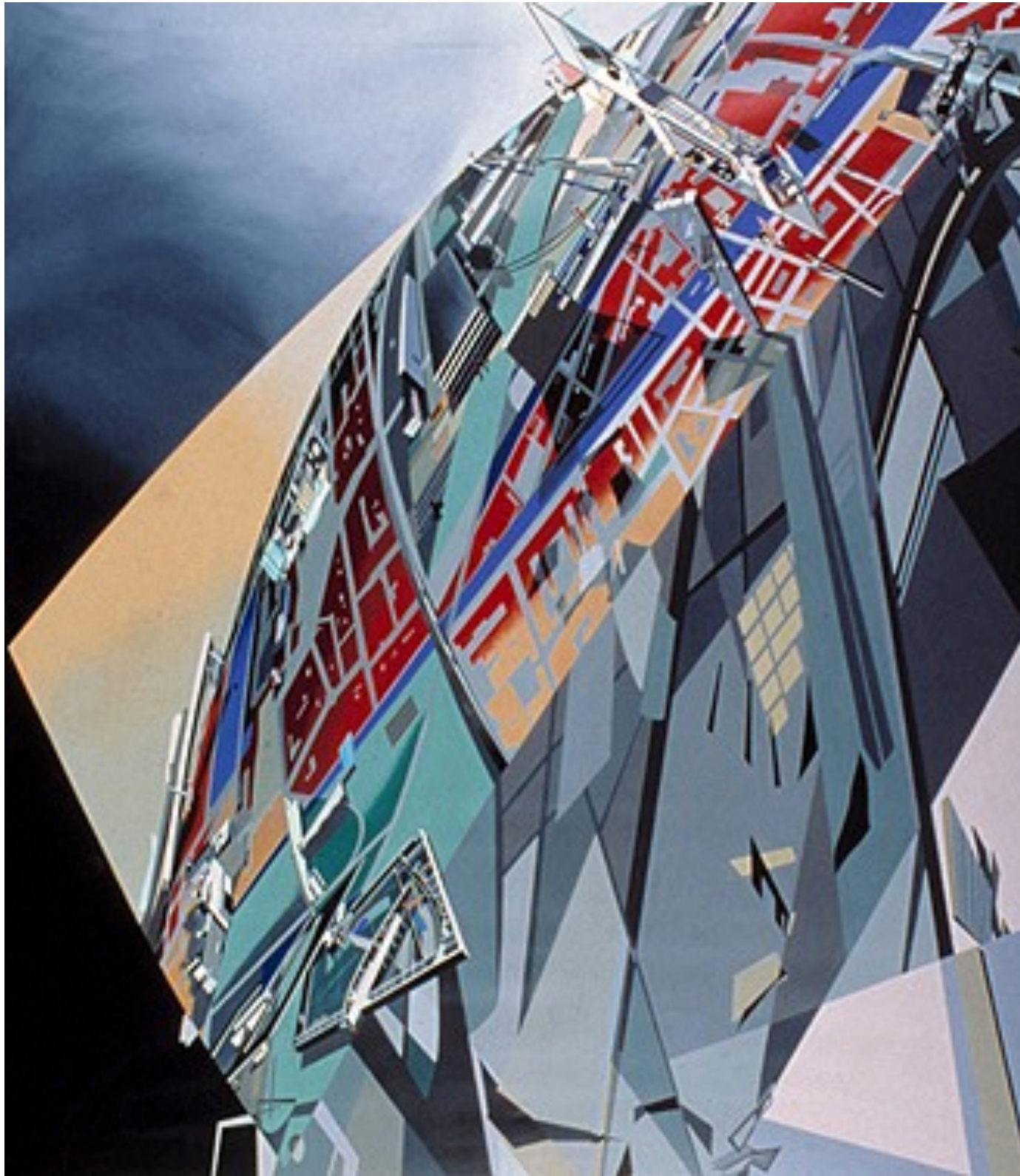
WHICH OF THESE IMAGES IS MORE CLOSE OUR FEELING?



## 3) PROCESSING OF THE METAPHOR

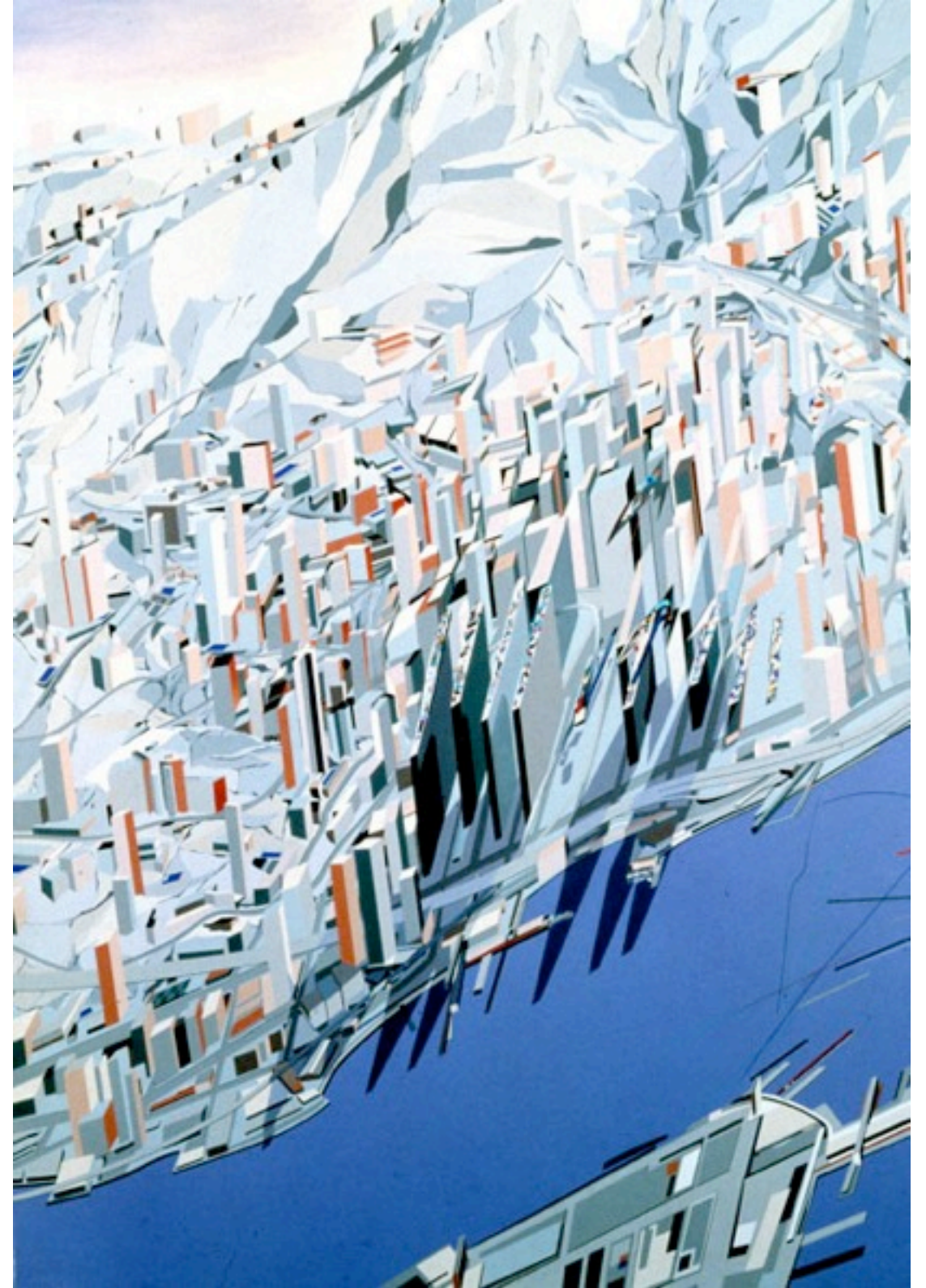
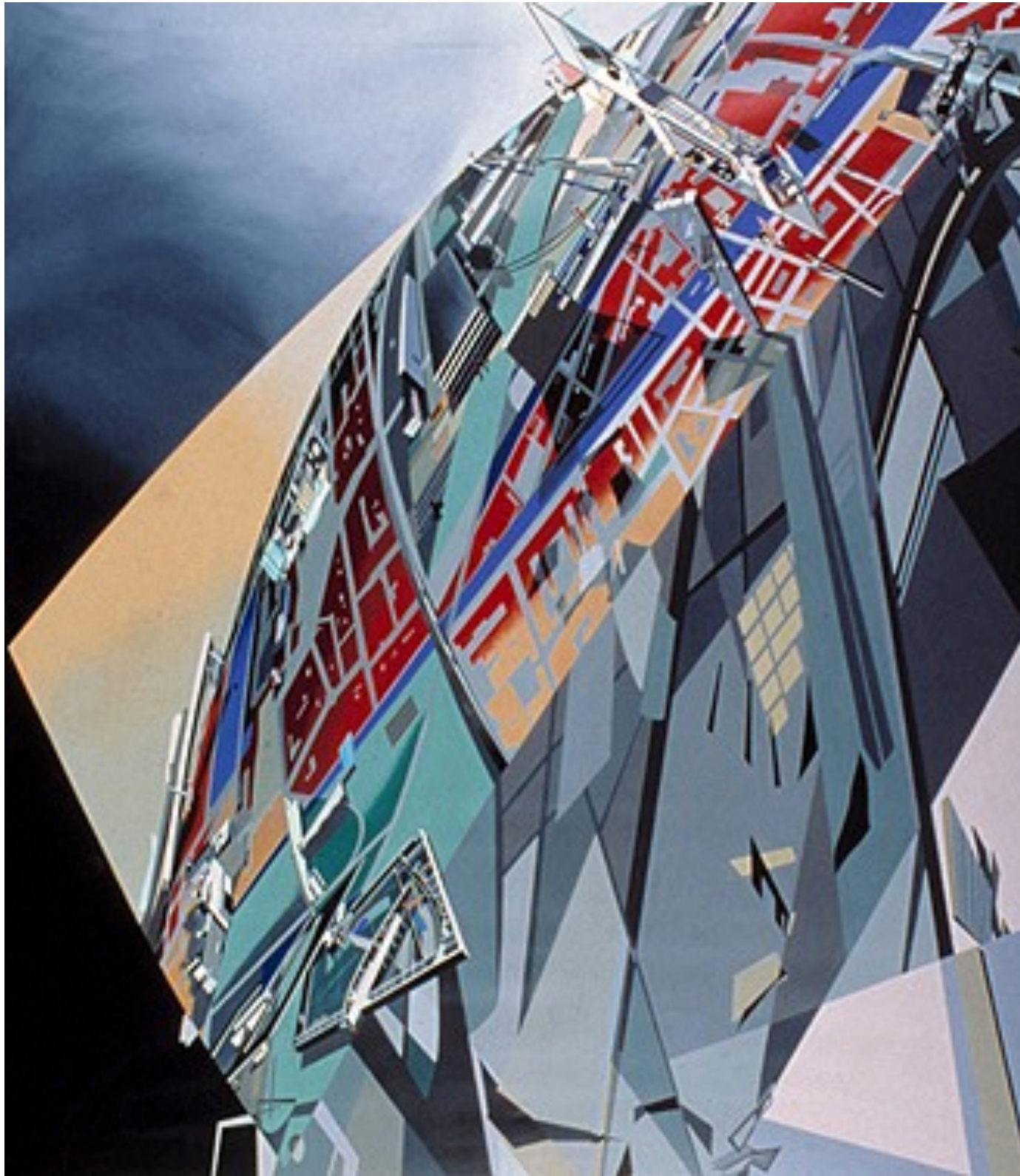


The emotional world of Zaha Hadid emerges through her paintings, Zaha creates her metaphor





The emotional world of Zaha Hadid emerges through her paintings, Zaha creates her metaphor





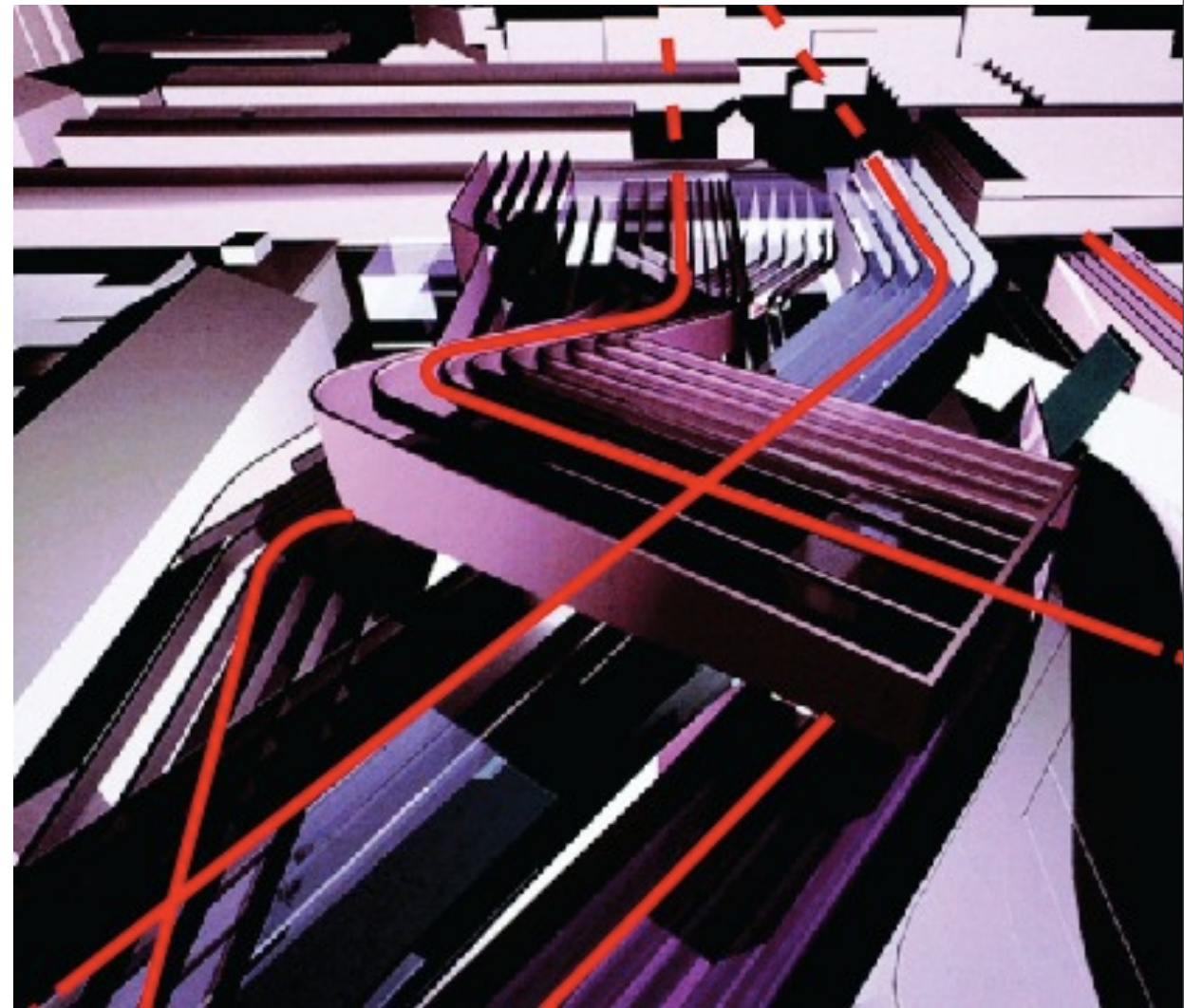
## 1) KEY WORDS

- flow
- moving
- speedy

## 2) RESEARCH OF THE IMAGE IN OUR MIND

- As if...was flow of the water
- As if...was flow of the electricity
- As if...was lightning in the sky

WHICH OF THESE IMAGES IS MORE CLOSE OUR FEELING?



## 3) PROCESSING OF THE METAPHOR



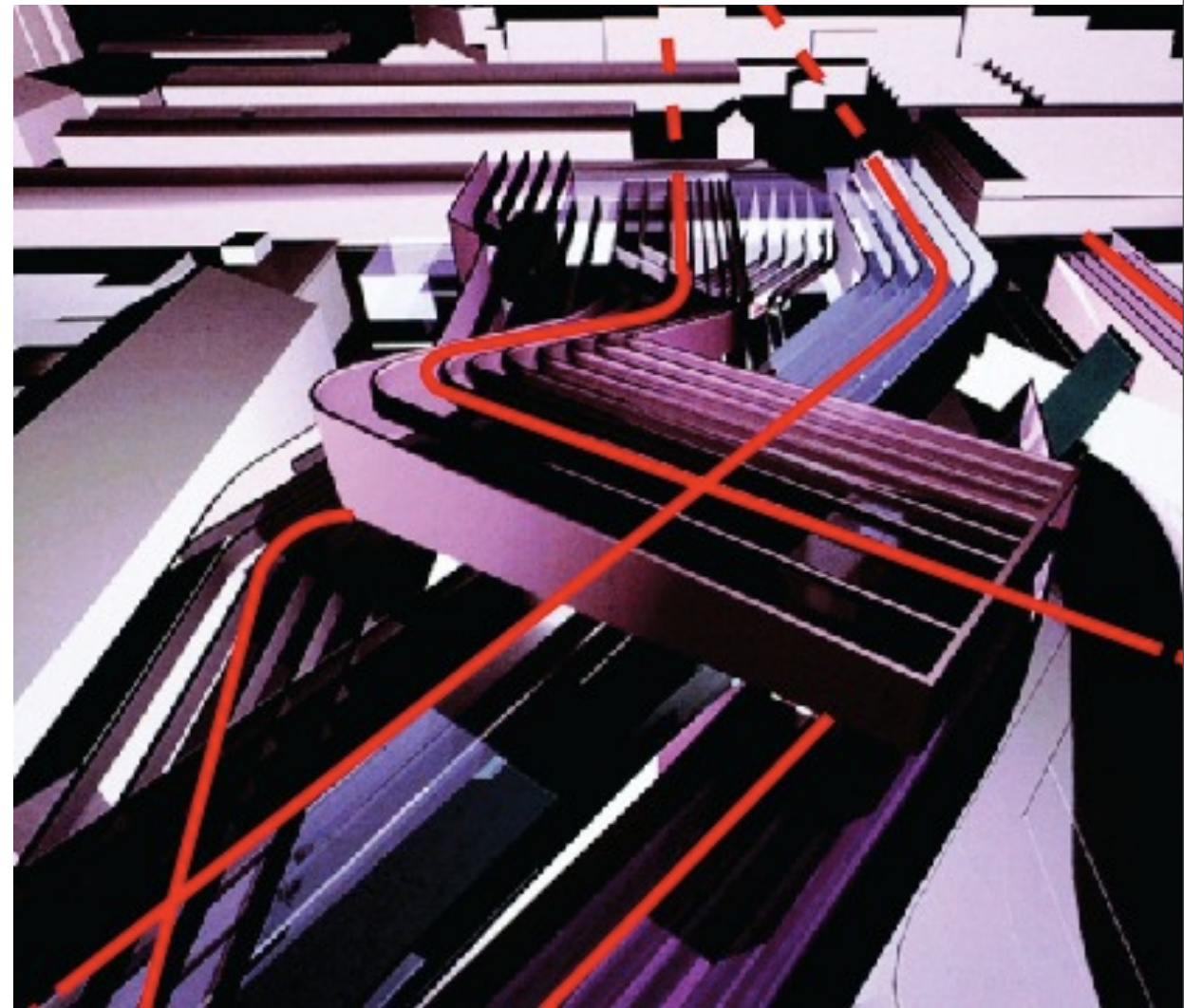
## 1) KEY WORDS

- flow
- moving
- speedy

## 2) RESEARCH OF THE IMAGE IN OUR MIND

- As if...was flow of the water
- As if...was flow of the electricity
- As if...was lightning in the sky

WHICH OF THESE IMAGES IS MORE CLOSE OUR FEELING?



## 3) PROCESSING OF THE METAPHOR



# KEY WORDS

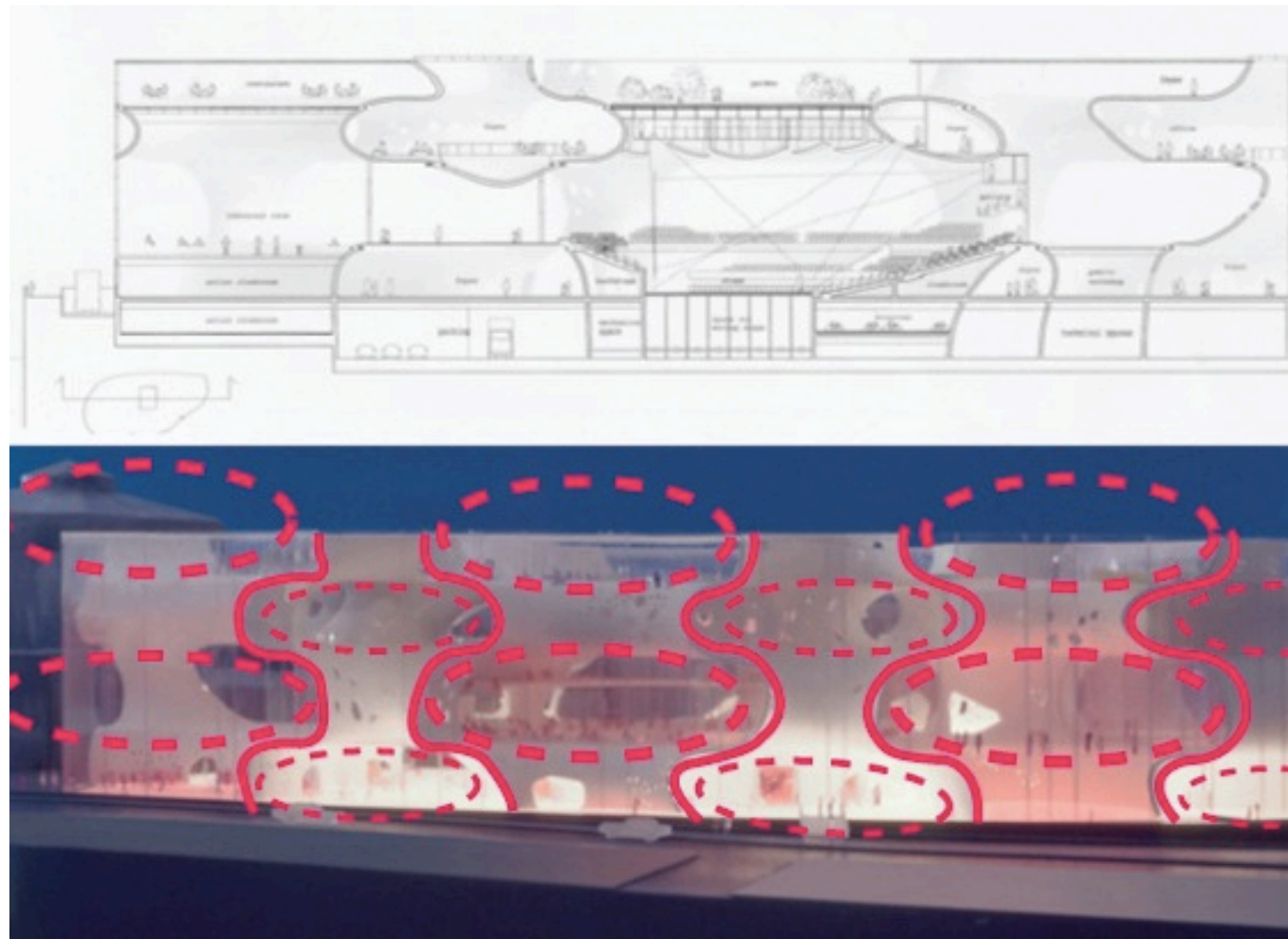
- porosity
- biological
- organic

## RESEARCH OF THE IMAGE IN OUR MIND

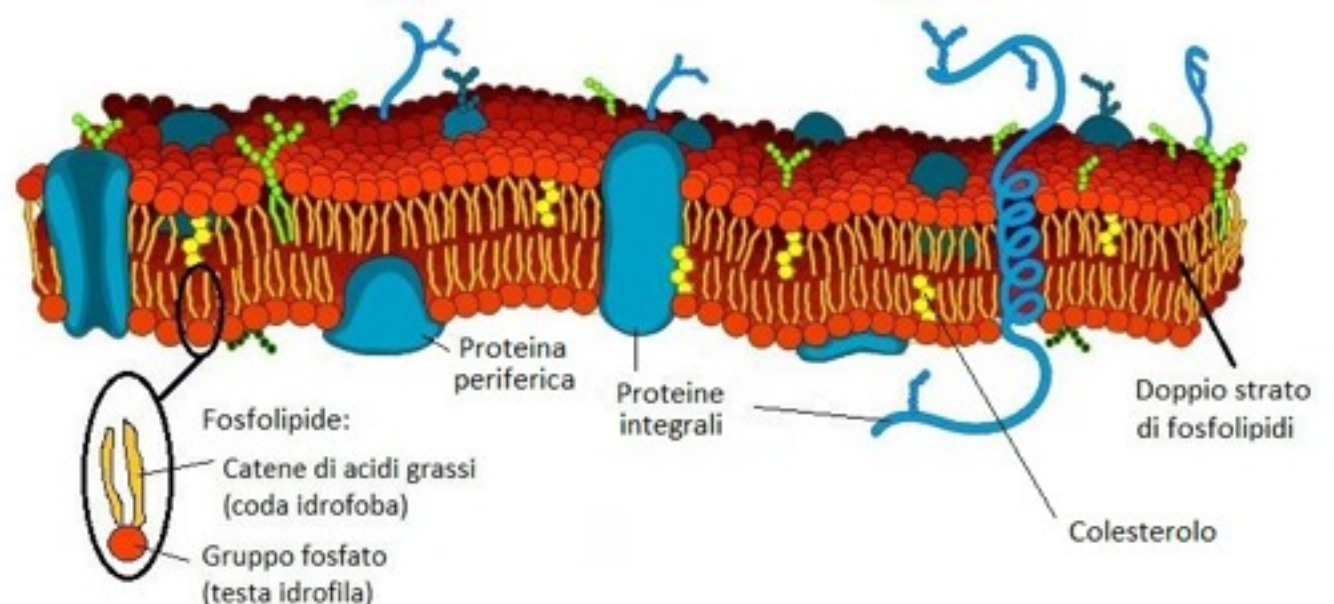
as if...was excavated soil from  
a drop of water

as if...was membrane of a cell under  
the microscope

WHICH OF THESE IMAGES IS MORE CLOSE OUR  
FEELING?



*Toyo Ito concorso con Andrea Branzi e Masato Araya, Forum per la Musica, la Danza e la Cultura Visiva di Gent, Belgio, 2003-2004*





# KEY WORDS

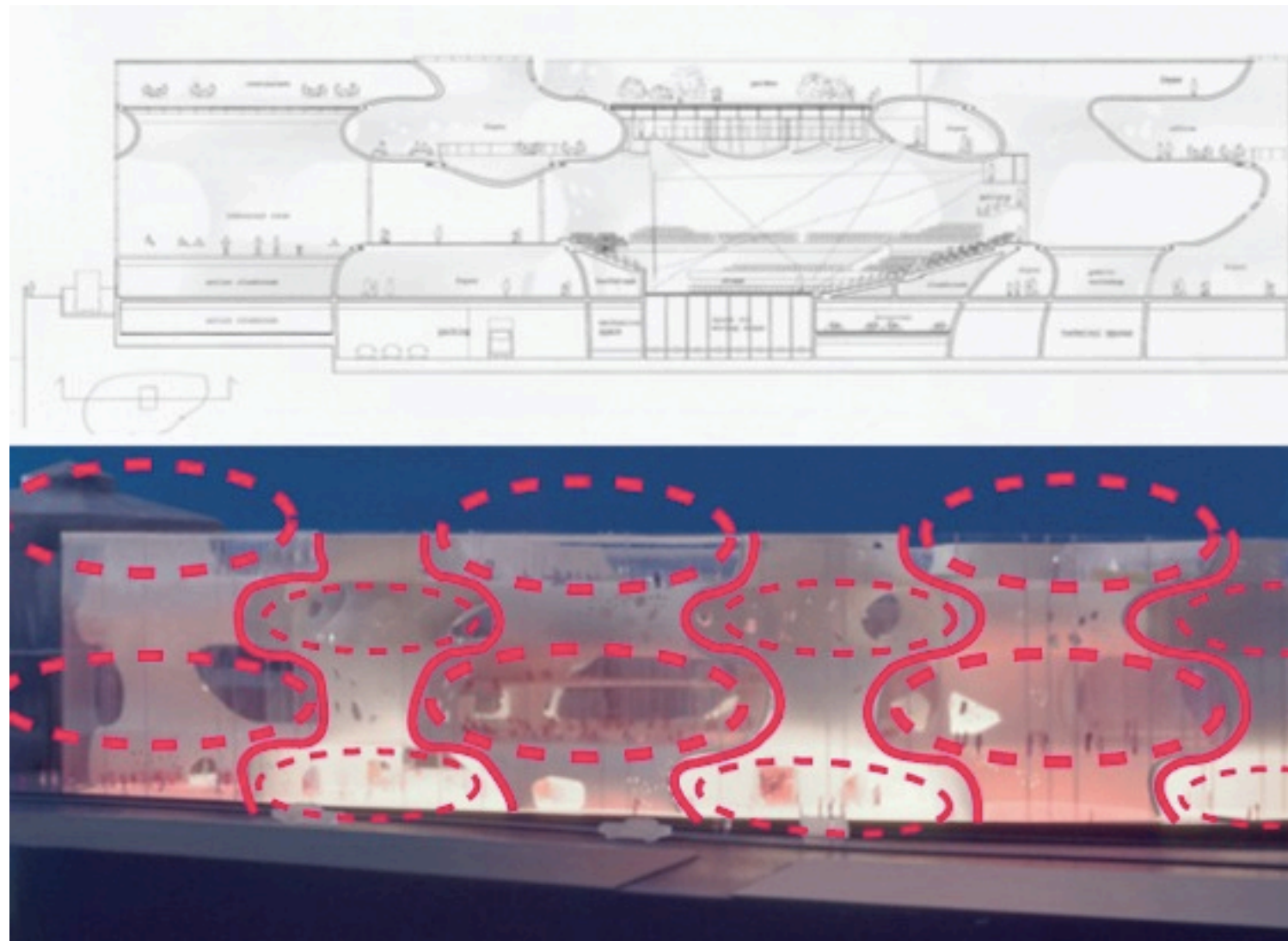
- porosity
- biological
- organic

## RESEARCH OF THE IMAGE IN OUR MIND

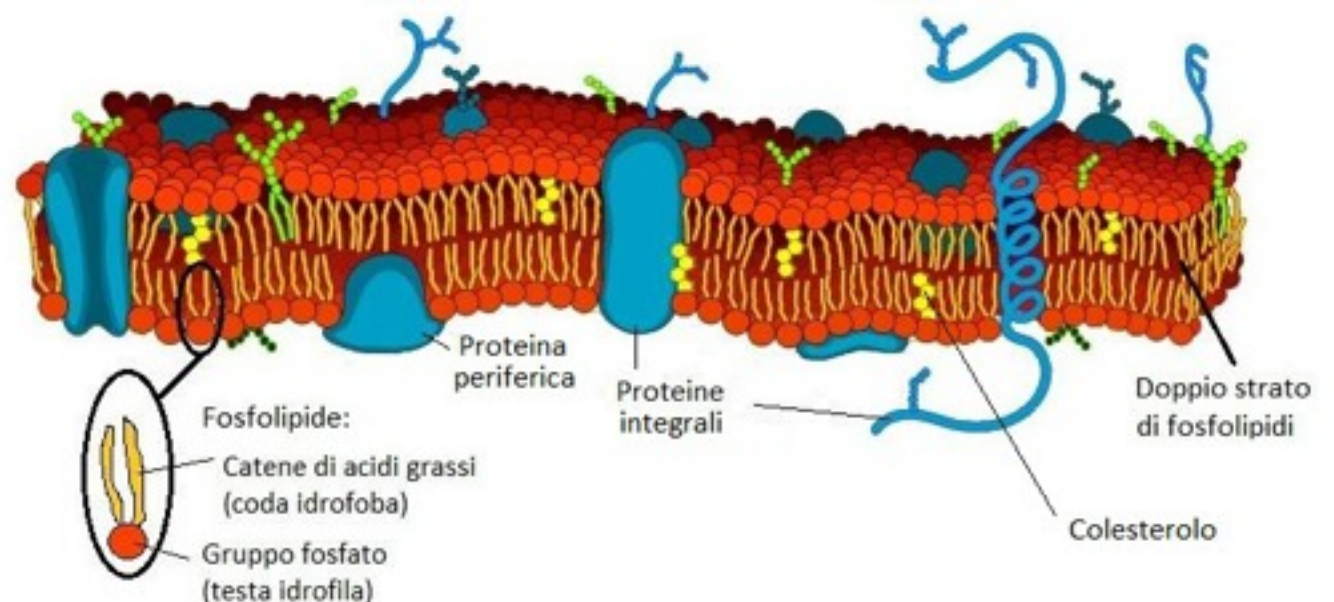
as if...was excavated soil from  
a drop of water

as if...was membrane of a cell under  
the microscope

WHICH OF THESE IMAGES IS MORE CLOSE OUR  
FEELING?



*Toyo Ito concorso con Andrea Branzi e Masato Araya, Forum per la Musica, la Danza e la Cultura Visiva di Gent, Belgio, 2003-2004*





**when we found the metaphorical image we have to get to the essence of the feeling that we want to express and perform an abstraction of the original image**

**when we found the metaphorical image we have to get to the essence of the feeling that we want to express and perform an abstraction of the original image**



We can this approach trough the metaphor at every scale of the project because is a way of thinking, and therefore to be



**Galleria di Architettura "come se"**

**Progettista e direttore dei lavori:** arch Rosetta Angelini

**Progetto concept e grafico:** arch. Antonino Di Raimo

**Consulente:** arch. Antonino Saggio

## The space before the work



**I never thought that space was empty but full  
Exist a energy field**



Research of the key words that to express the feeling of the full intended  
as energy field

**hollow-penetrate**

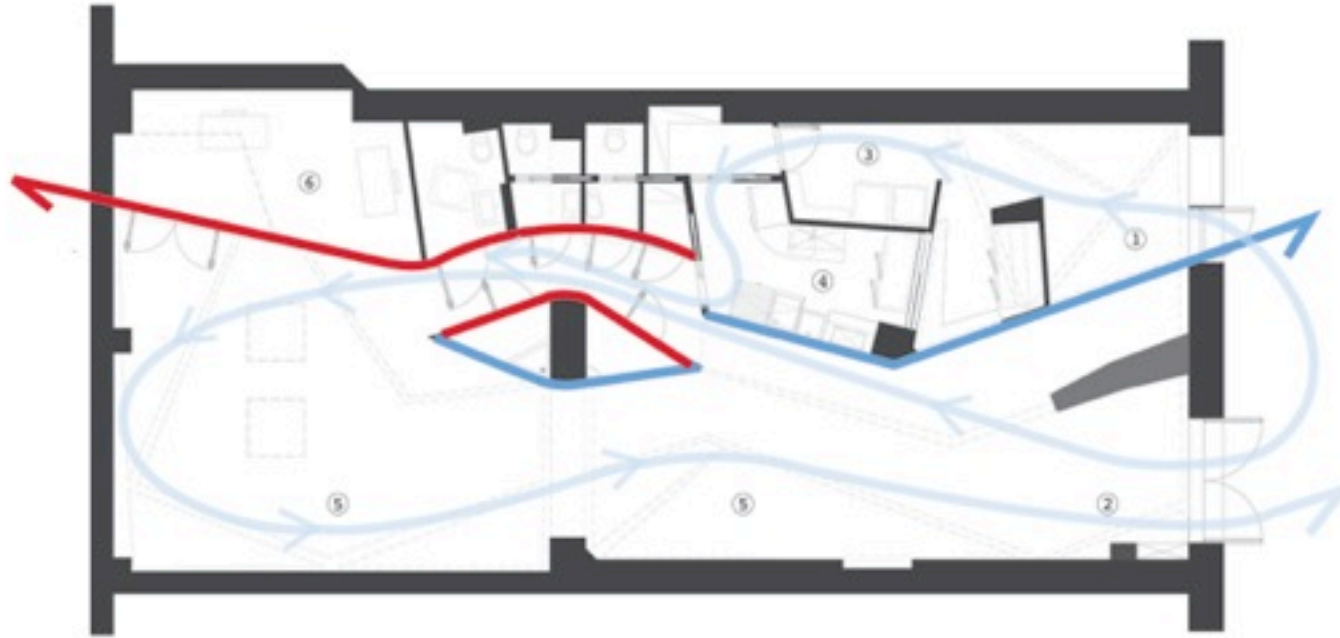


**shape-modeling**



**soft-enveloping**

# Search of the right images







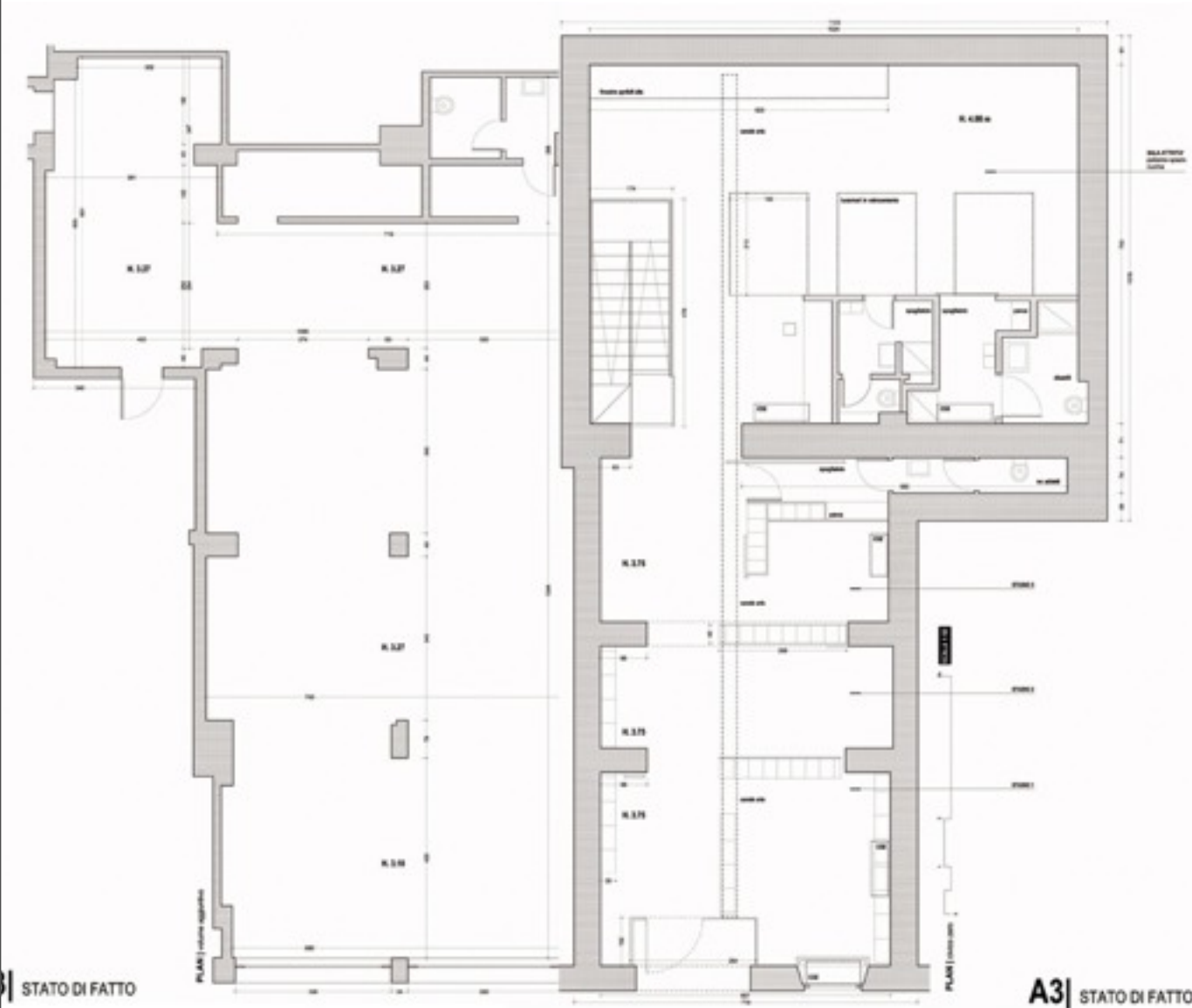






# CivicoZero\_Day Center for Teenage Children

Client: Save The Children Italia Onlus



PLANIMETRIA LOCALE / SISTEMAZIONE ARREDO



Client: Save The Children Italia

Designer and director of work: arch. Rosetta Angelini

Consultant concept: arch. Antonino Saggio

Collaborators: Cristian Farinella, Lorena Greco

## KEY WORDS

flow

acceptance

## IMAGES METAPHORIC

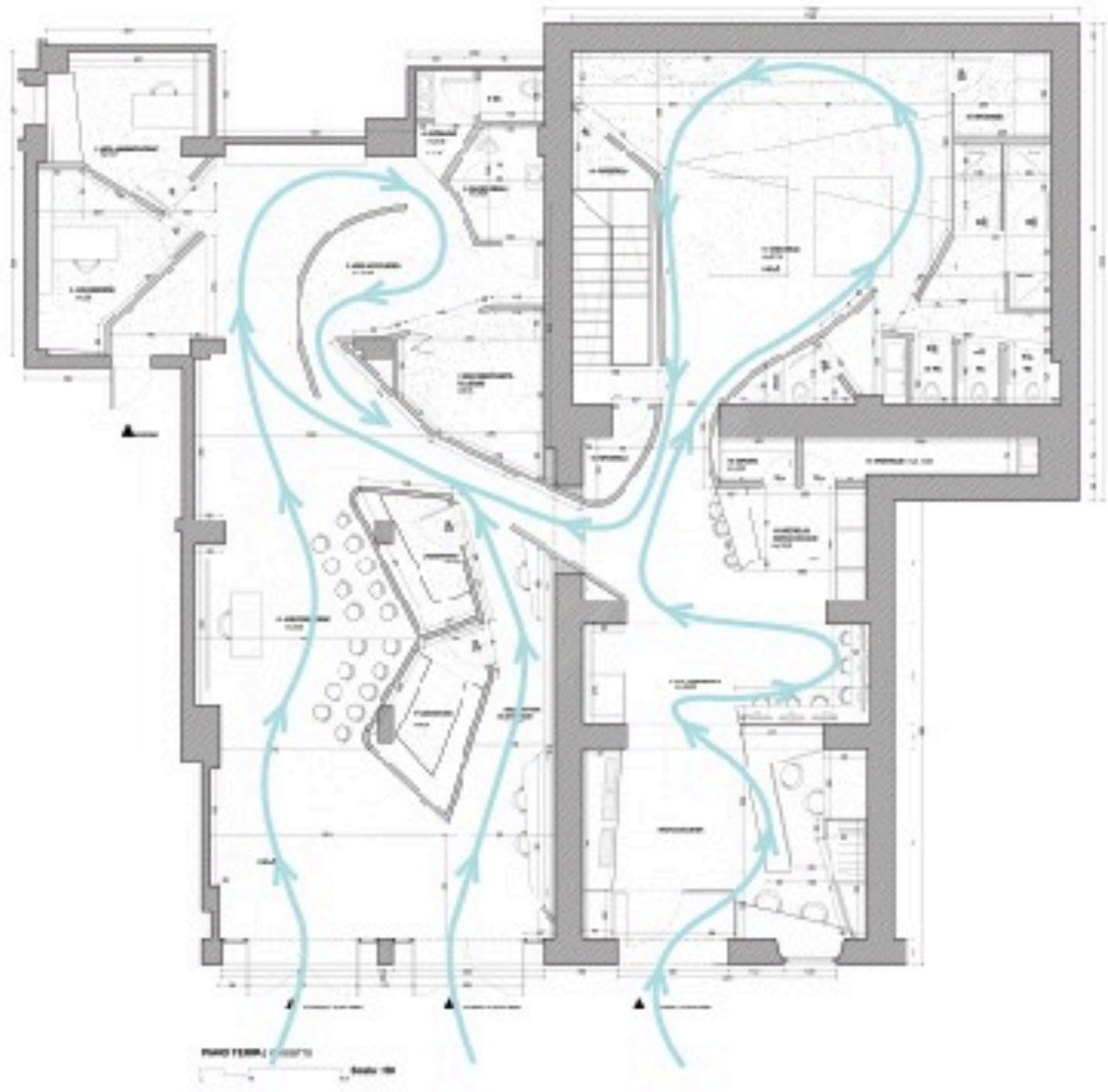


flow of boys

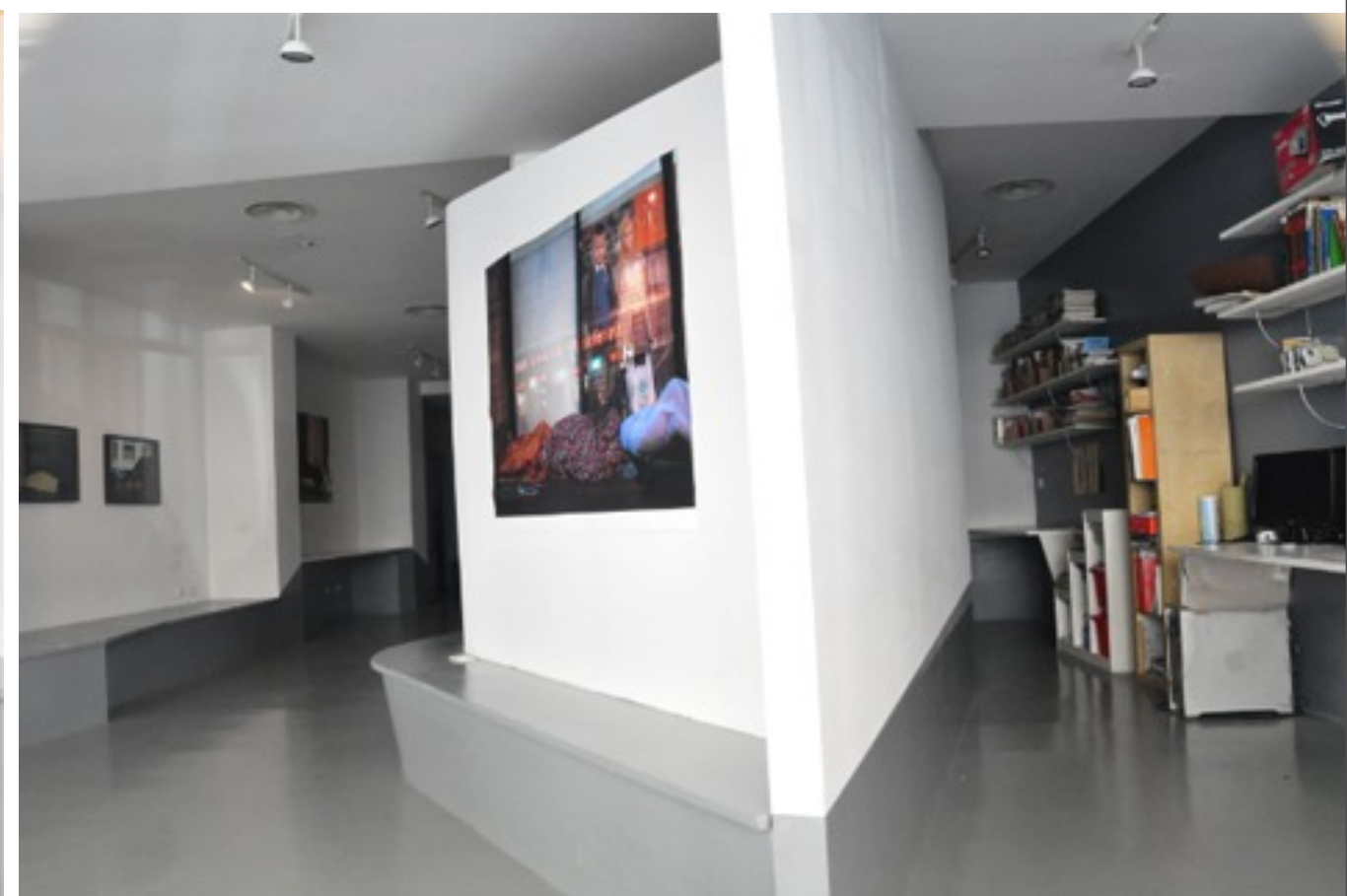


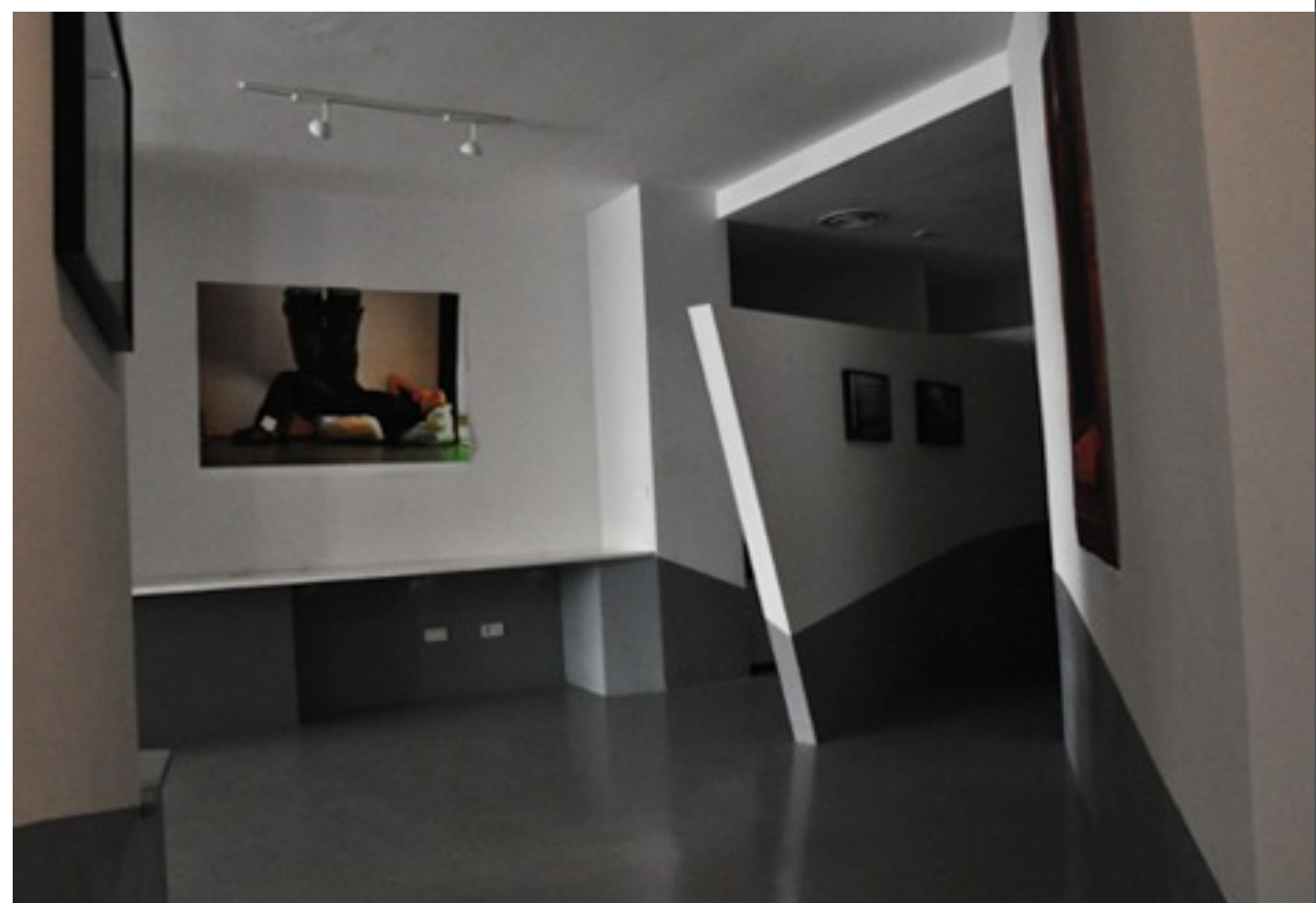
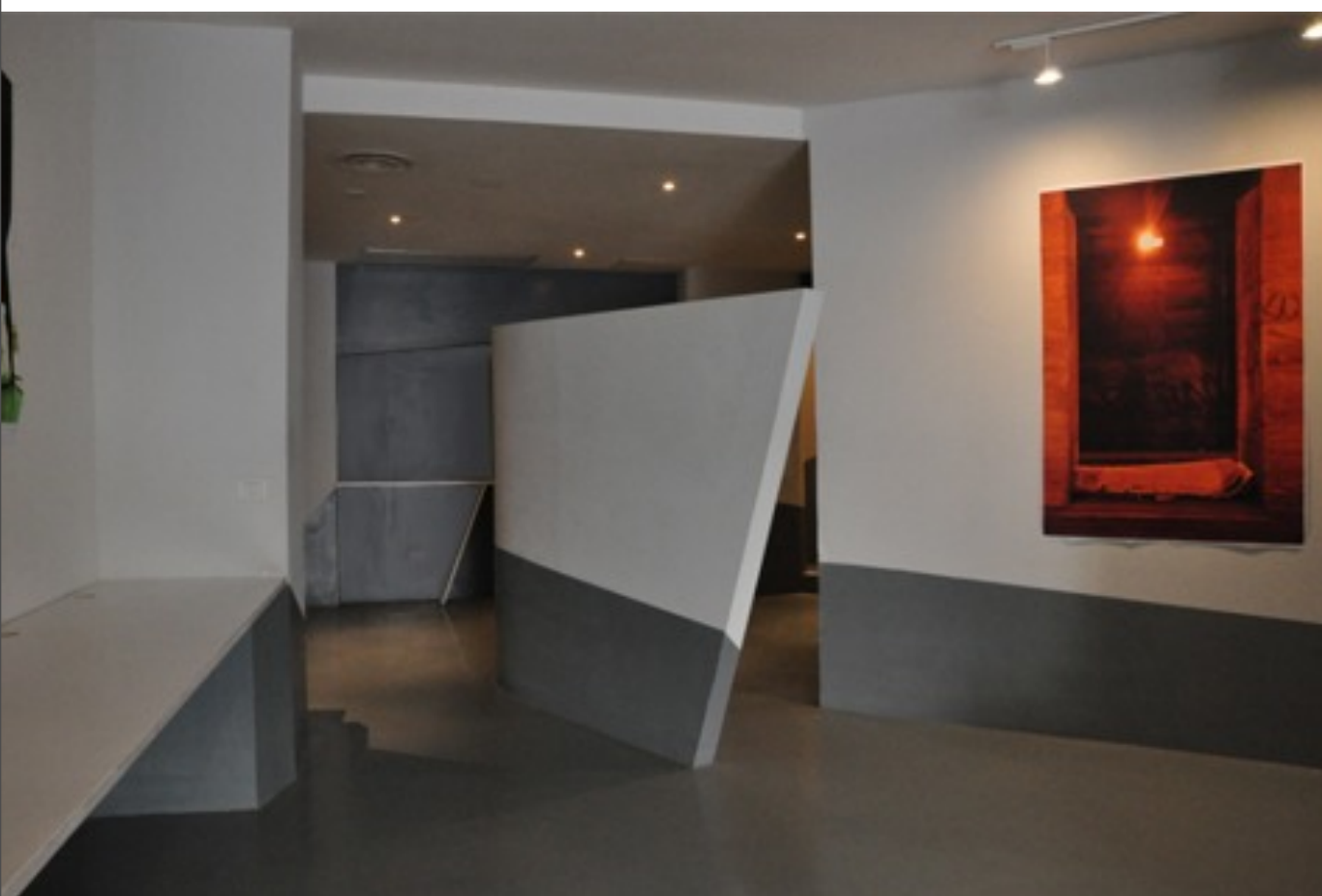
embrace

PLANIMETRIA LOCALE / SISTEMAZIONE ARREDO

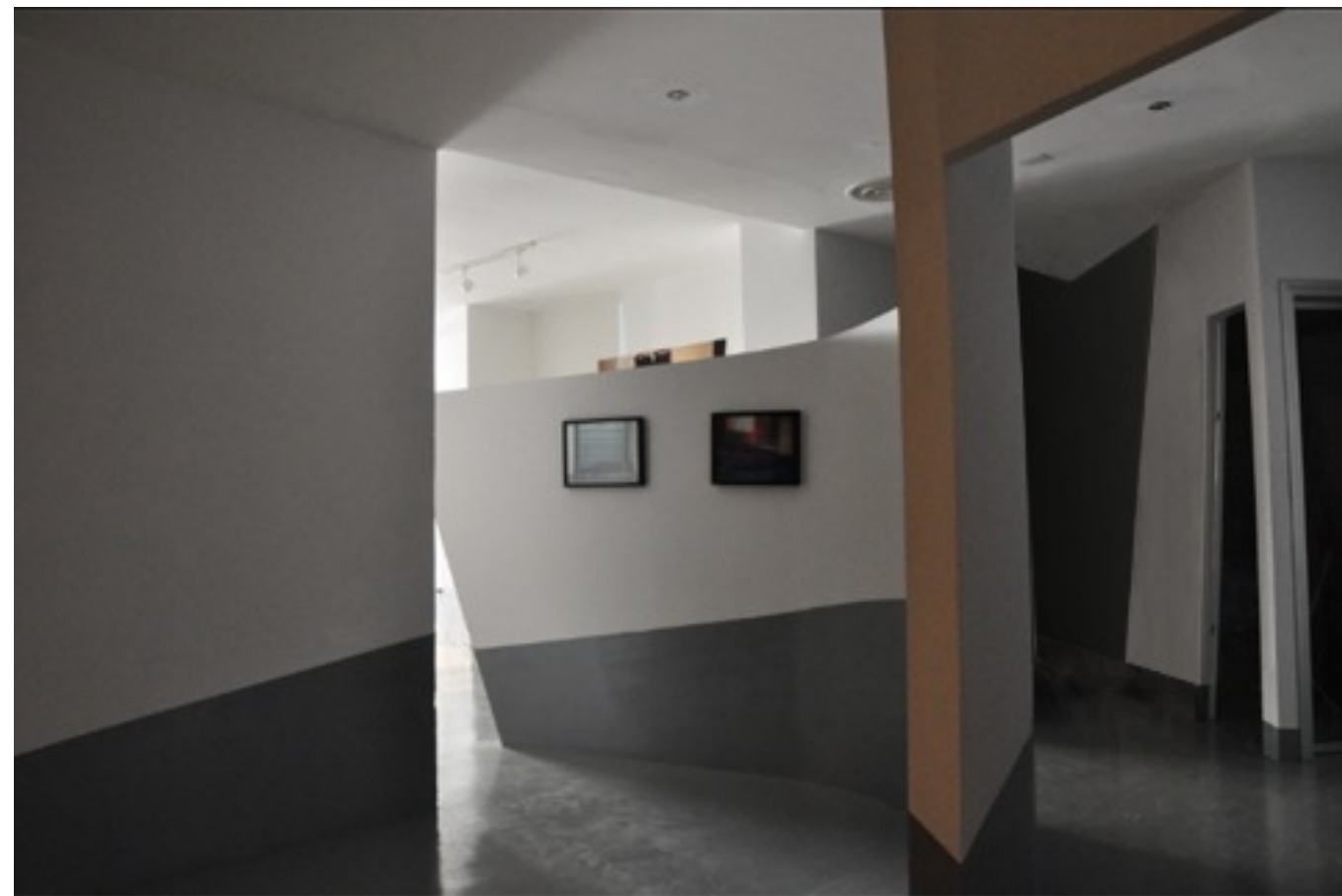
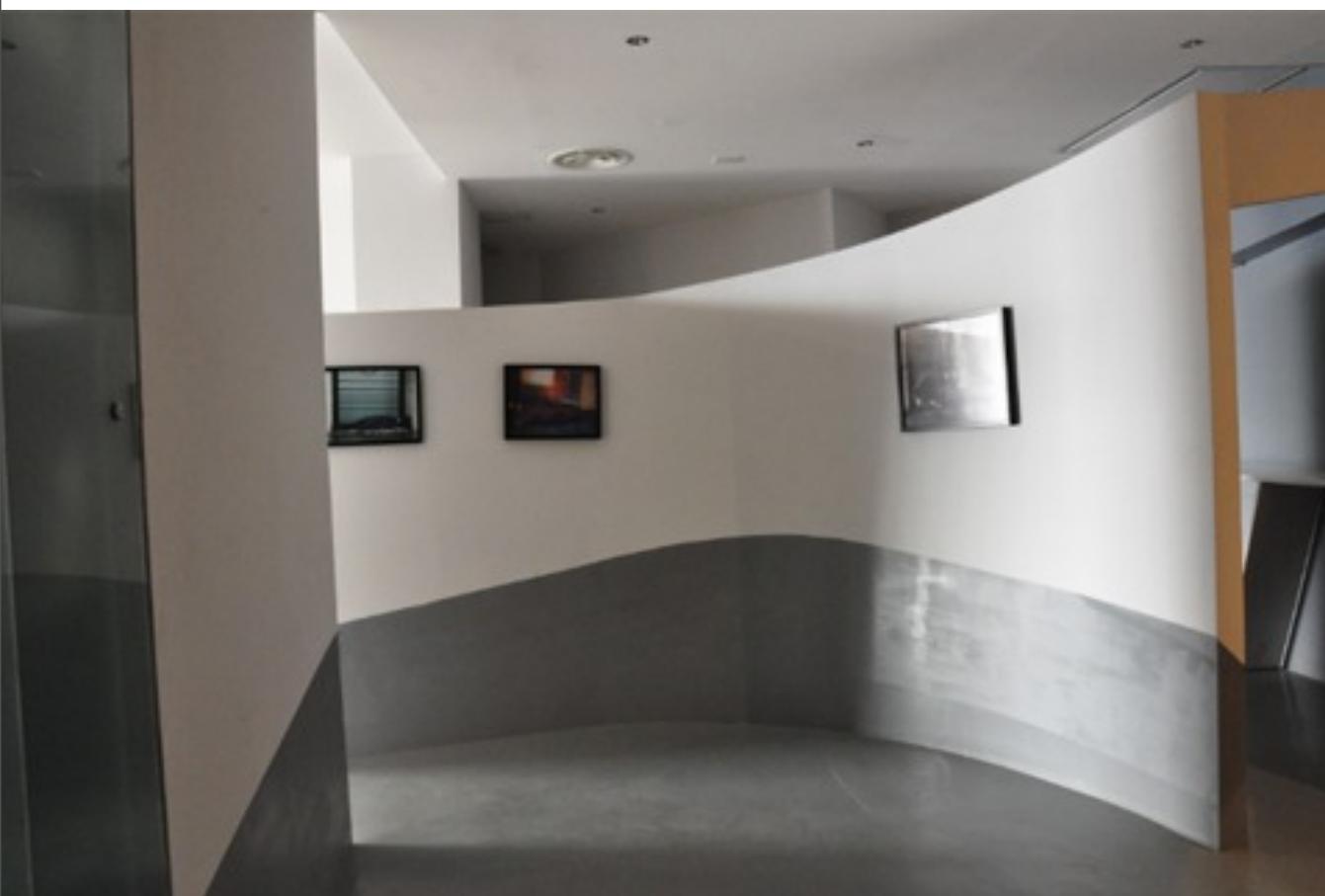
















# Connection as energy field permeable

## The Events Field

### Gaia Teory of James Lovelock

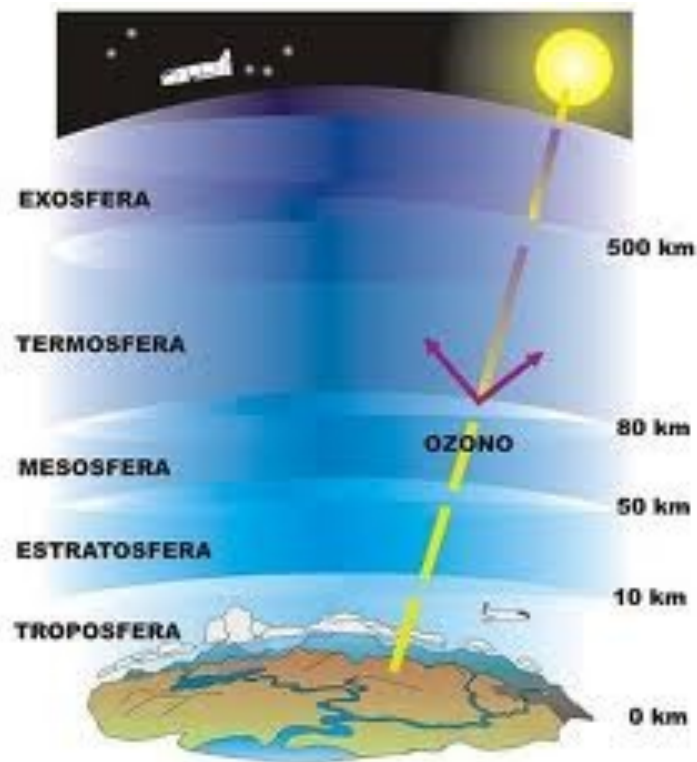
The atmosphere in addition to protecting the earth regulates the life and according to this theory we can know if there is life on the planet only studing its atmosphere

L'atmosfera, protects at the same time allows the passage of a part of solar rays that guarantee the life on earth

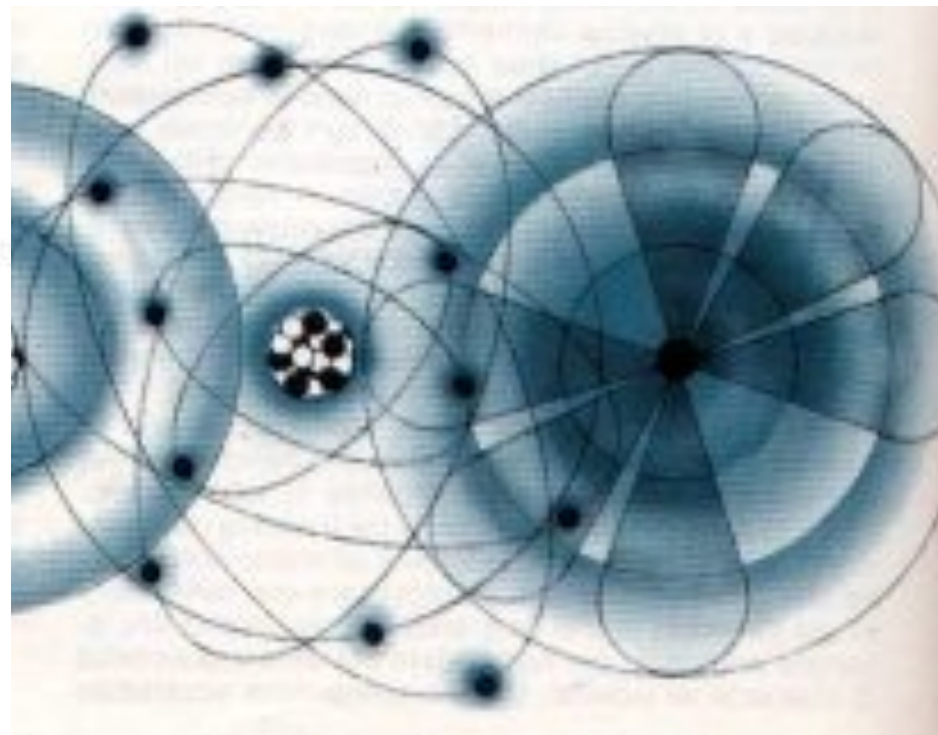
Every thing and living being in a unitary system is characterized by an energy field permeable that protects but at the same time guarantees the evolution of the system

This energy field is called **EVENTS FIELD**

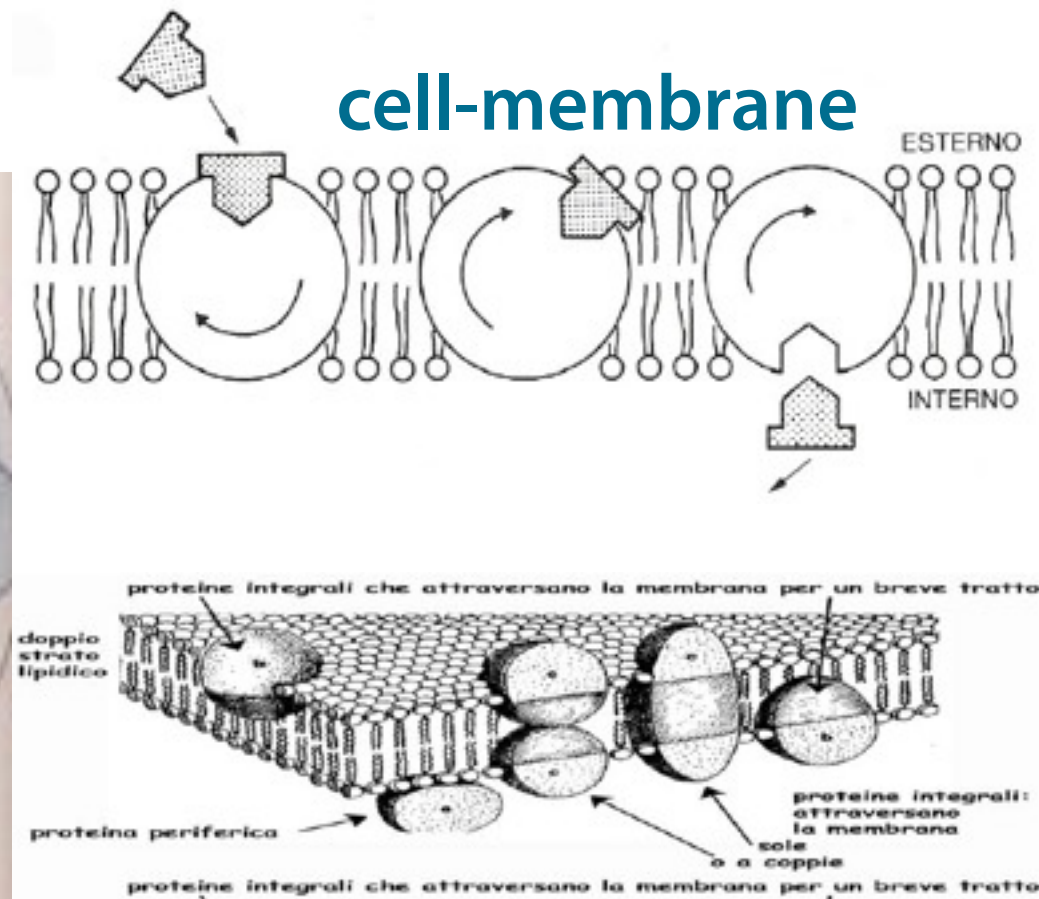
### earth-atmosphere



### atom-energy field



### cell-membrane



### Events Field

We can apply this concept to the events field to any scale of project

# FREE\_New Office for Amnesty International Section Italian Onlus

**Client:** Amnesty International Section Italian Onlus

Amnesty International is association that the struggle for human rights the right to speak to express their thoughts

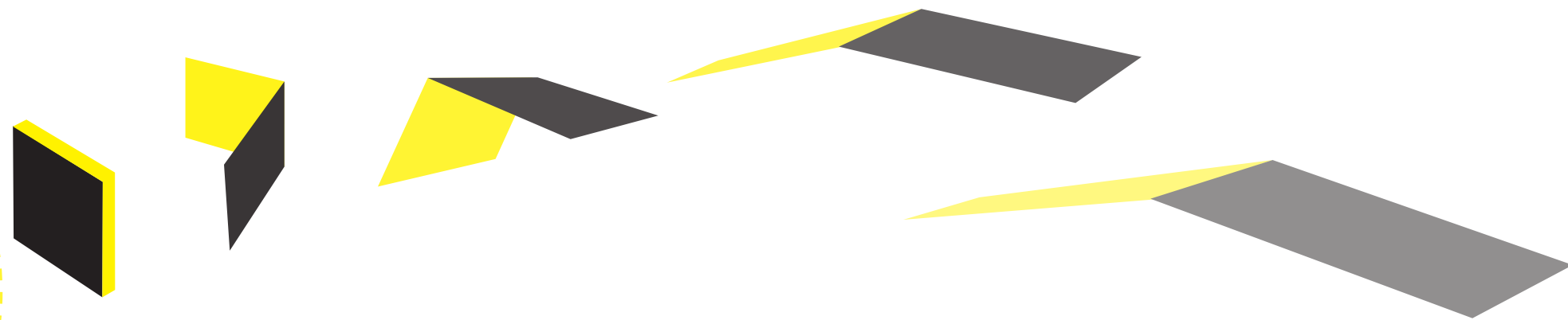
The concept starts from the idea of freedom as a book that opens and lets go fly their thought

The project had to be semple to organize an open space defined by areas that would provide privacy, very functional but strongly characterized

**I decided of to work on the connective space**

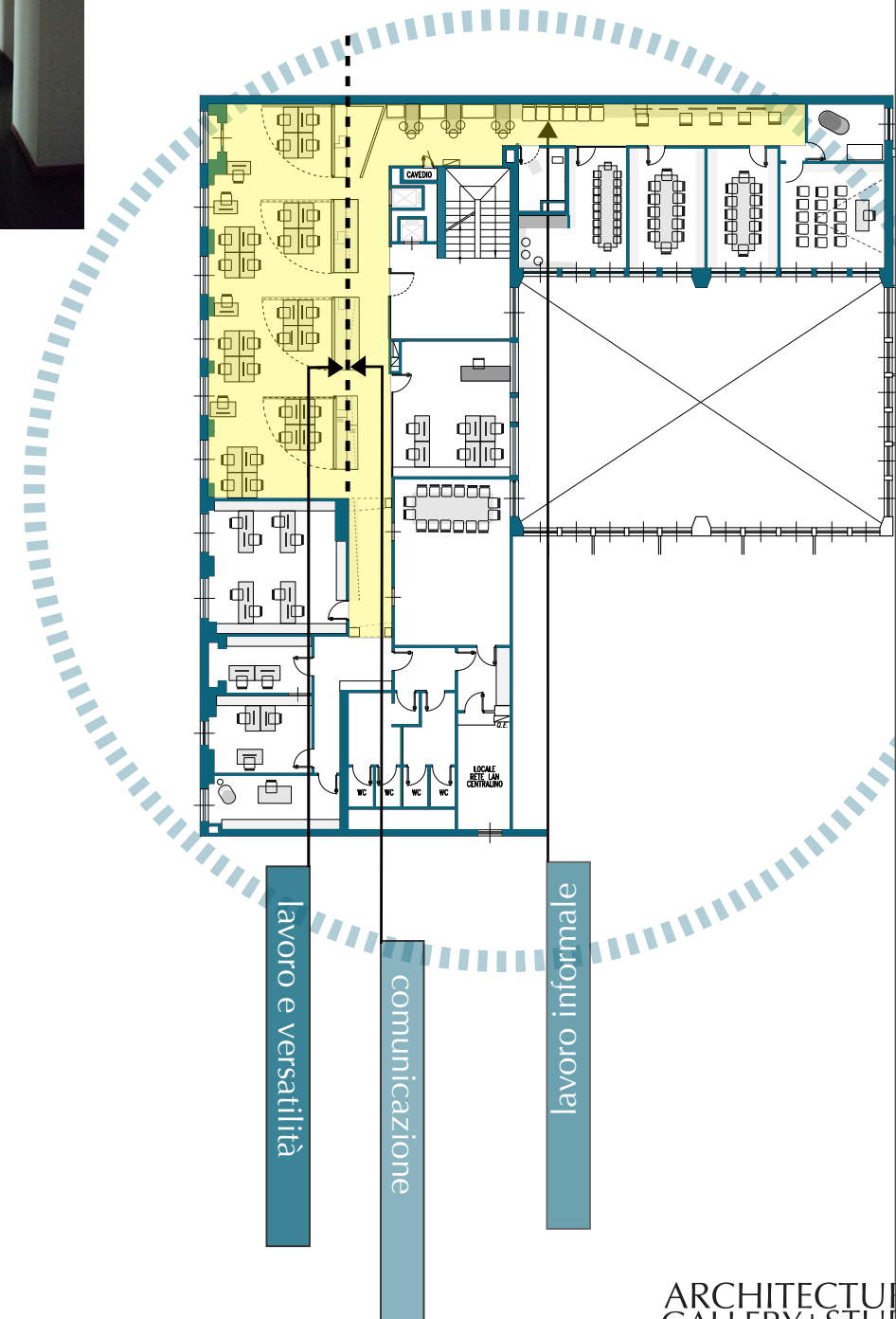
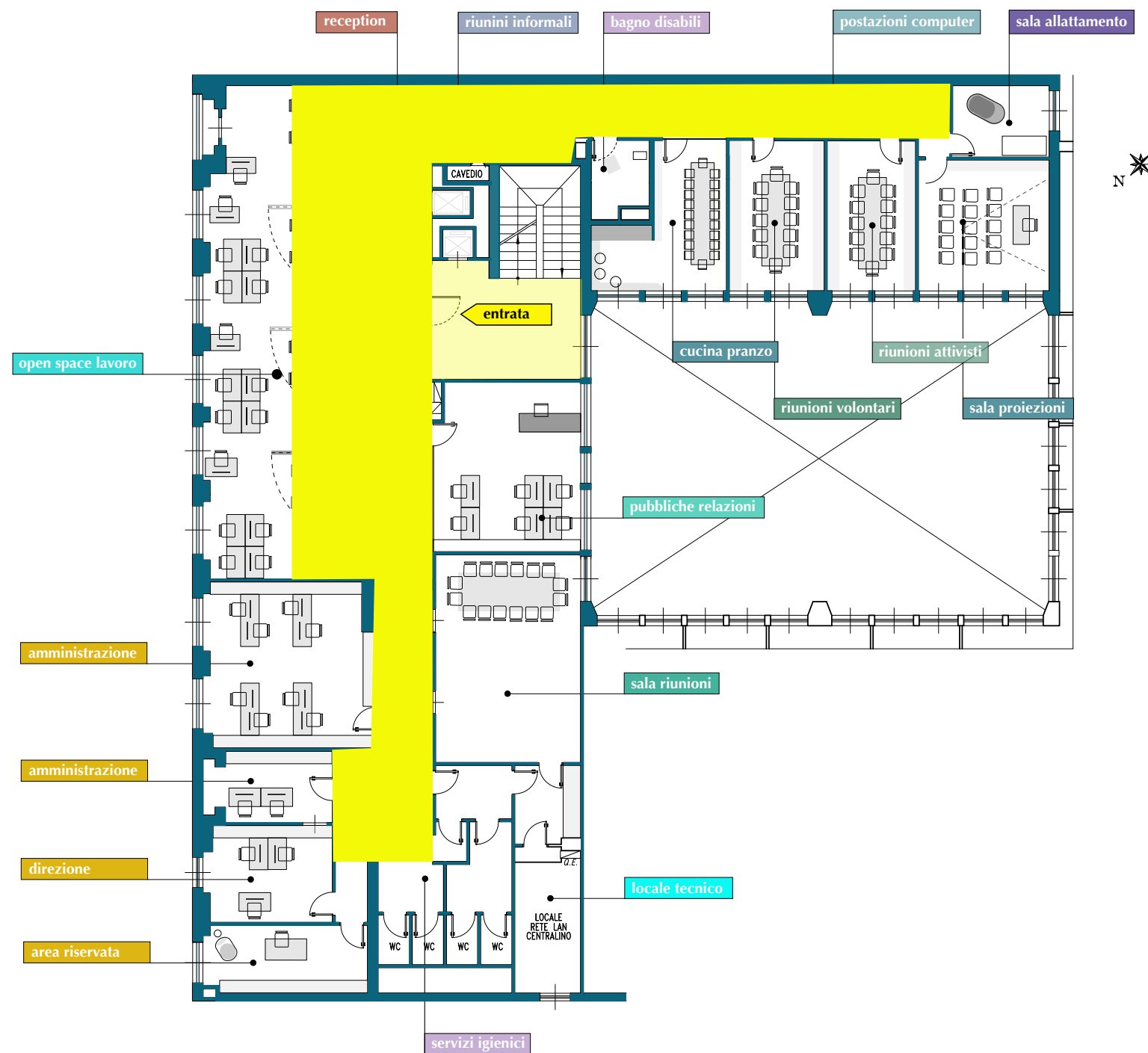
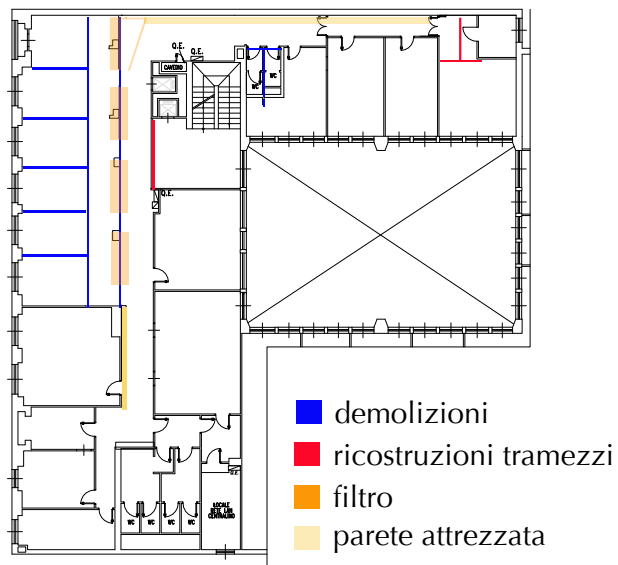


LIB(E)RO



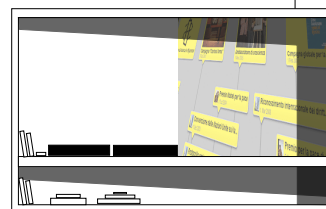
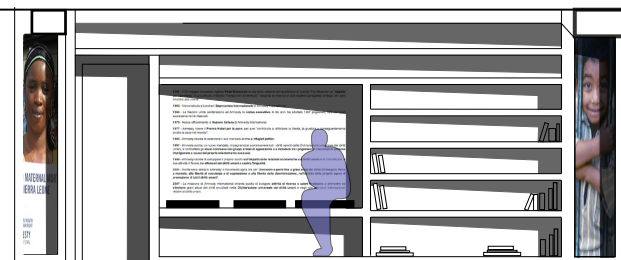
AMNESTY INTERNATIONAL SEZIONE ITALIANA ONLUS



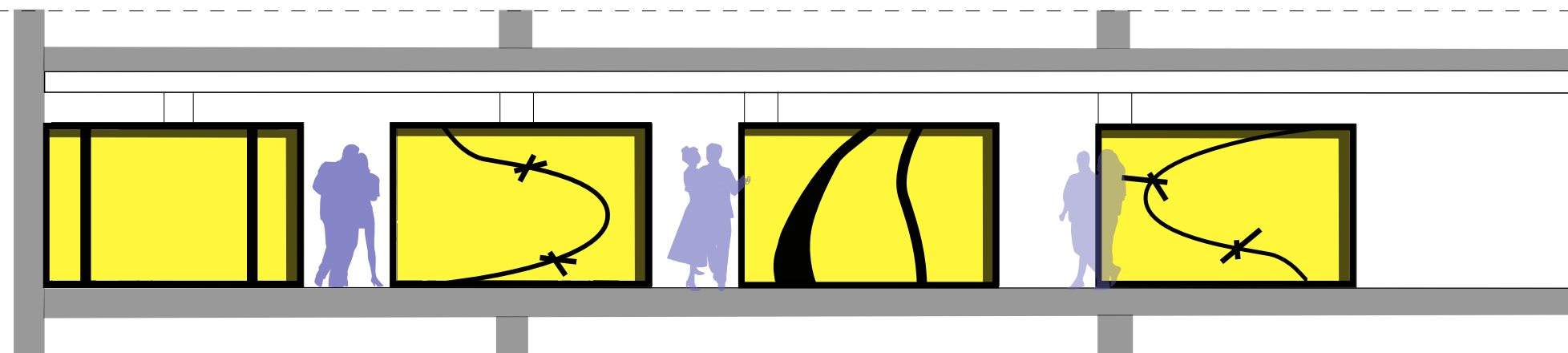
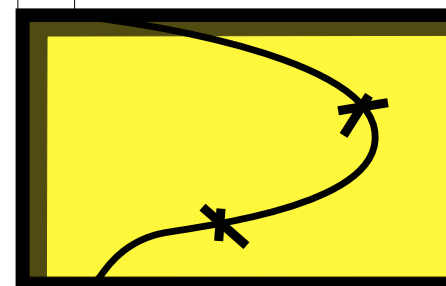
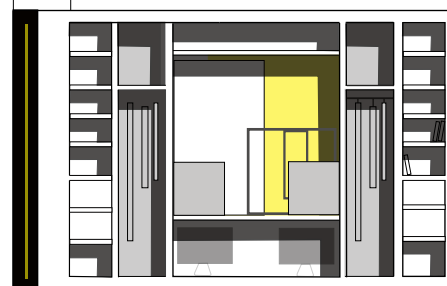


ARCHITECTURAL  
GALLERY+STUDIO  
EXHIBITION  
SYMPOSIUM  
WORKSHOPS  
PERFORMANCE  
MEETINGS  
**come**

Progettista: arch. Rosetta  
Collaboratori: Cristian Fari



a



b



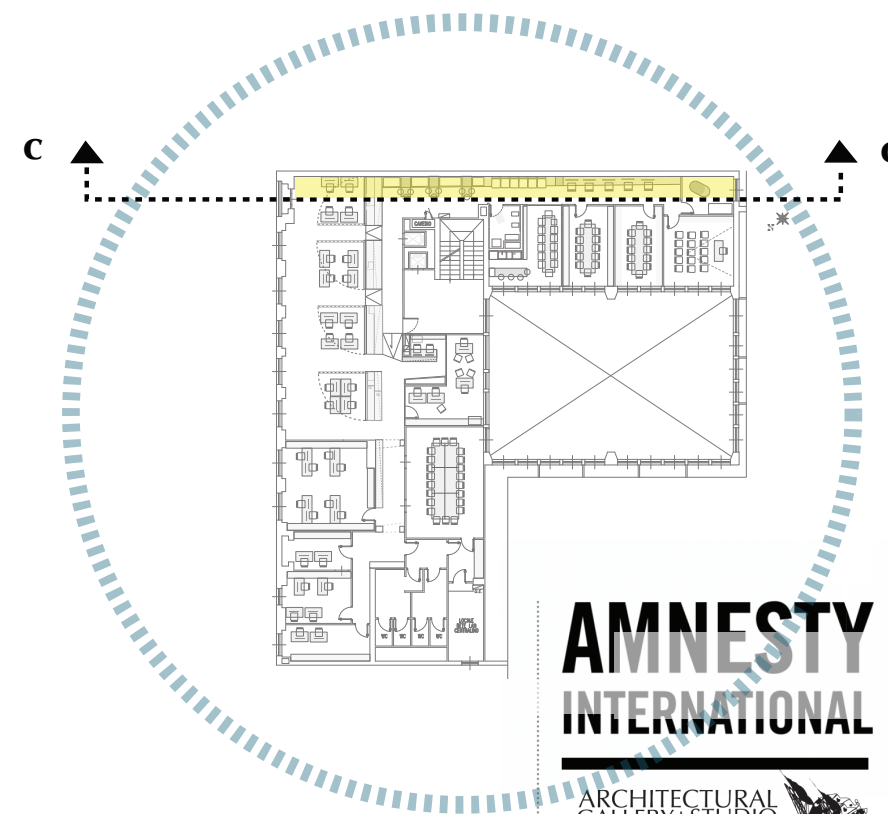
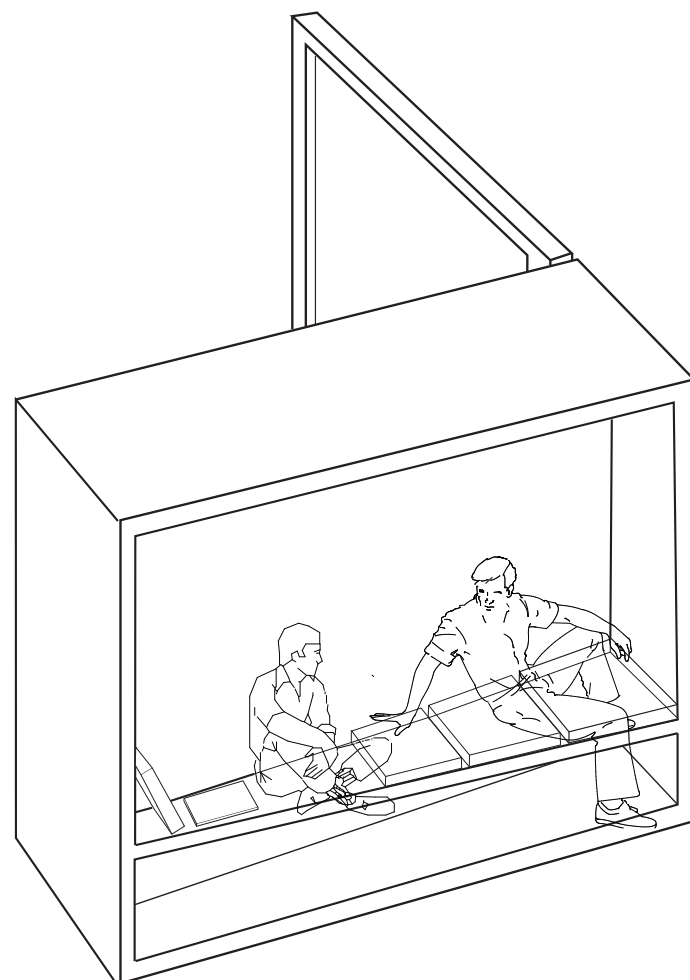
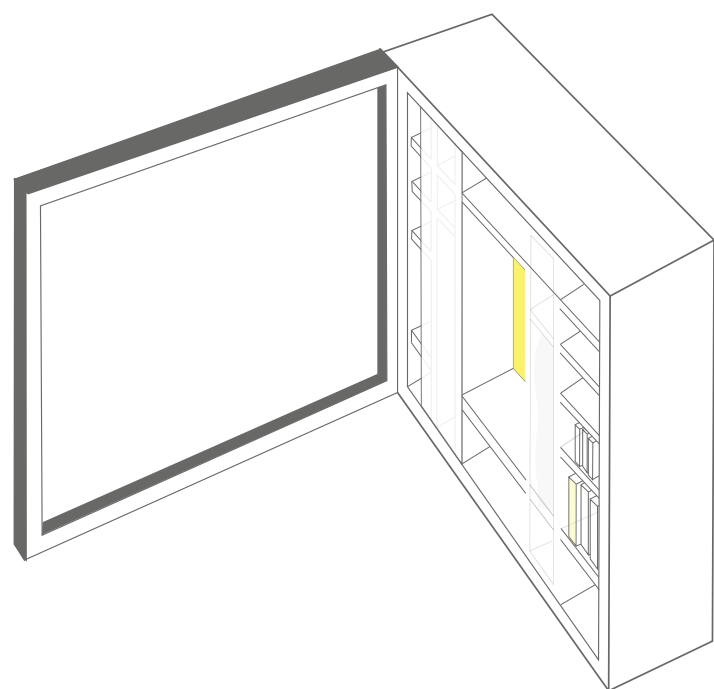
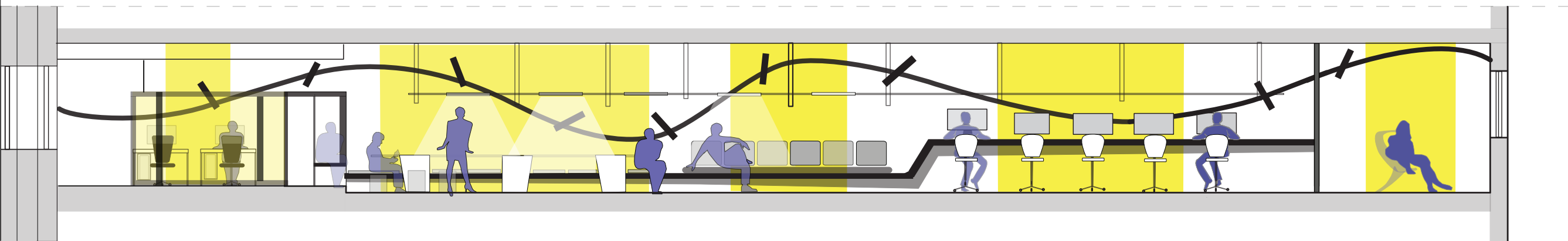
# AMNESTY INTERNATIONAL

ARCHITECTURAL  
GALLERY+STUDIO  
EXHIBITION  
SYMPOSIUM  
WORKSHOP  
PERFORMANCE  
MEETING

## come se

**PROGETTO:**  
Ristrutturazione leggera sede per uffici  
**LUOGO:**  
Via Magenta 5 - Roma  
**CLIENTE:**  
AMNESTY INTERNATIONAL  
**PROGETTISTI:**  
Rosetta Angelini, Cristian Farinella,  
Lorena Greco  
**DATA:** 4-12-2012





**AMNESTY  
INTERNATIONAL**

ARCHITECTURAL  
GALLERY+STUDIO  
EXHIBITION  
SYMPOSIUM  
WORKSHOP  
PERFORMANCE  
MEETING

**come se**

**PROGETTO:**  
Ristrutturazione leggera sede per uffici  
**LUOGO:**  
Via Magenta 5 - Roma  
**CLIENTE:**  
AMNESTY INTERNATIONAL  
**PROGETTISTI:**  
Rosetta Angelini, Cristian Farinella,  
Lorena Greco  
**DATA:** 4-12-2012



Il project begins from the entrance, when you go up the stairs we are struck by an image that welcomes, very communicative and already provides a series of information











AMNESTY  
INTERNATIONAL  
SEZIONE ITALIANA































**I think that is fundamental found ever a integration between science-technical and phylosophy-emotion only this way is possible a conscious evolution**

**The emotion get sense to the teory infact the basis of every discovery there is the human “observer” with her fears but also with his desires**

